

Tislelizumab RATIONALE 305

PRELIMINARY SCORE

CURATIVE



NON-CURATIVE



ADJUSTMENTS

Quality of life



QoL data pending



Serious and disabling adverse effects



Other adjustments



Tislelizumab RATIONALE 305

SCORE

CURATIVE

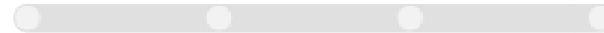


Overall Survival / Disease-Free Survival / Pathological Complete Response

NON-CURATIVE



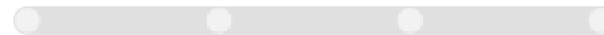
Overall Survival



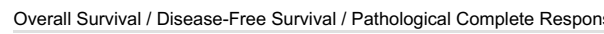
Progression-Free Survival



Non-inferiority (Improved Quality of Life or Reduced Adverse Events) / Response Rate



Overall Response Rate / Duration of Response



Overall Survival / Disease-Free Survival / Pathological Complete Response

INFORMATION

Tumour type: Gastrointestinal Cancers

Therapeutic Indication: Tislelizumab in combination with platinum and fluoropyrimidine-based chemotherapy, is indicated for the first-line treatment of adult patients with HER-2-negative locally advanced unresectable or metastatic gastric or gastroesophageal junction (G/GEJ) adenocarcinoma whose tumours express PD-L1 with a tumour area positivity (TAP) score $\geq 5\%$

Experimental Arm: Tislelizumab + Platinum + fluoropyrimidine-based ChT

Control Arm: Placebo + platinum + fluoropyrimidine-based ChT



