

Nivolumab CHECKMATE-901

PRELIMINARY SCORE

CURATIVE



NON-CURATIVE



ADJUSTMENTS

Quality of life



Serious and disabling adverse effects



Other adjustments



Nivolumab CHECKMATE-901

SCORE

CURATIVE



Overall Survival / Disease-Free Survival / Pathological Complete Response

NON-CURATIVE



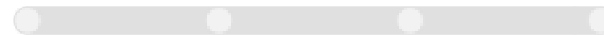
Overall Survival



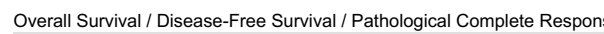
Progression-Free Survival



Non-inferiority (Improved Quality of Life or Reduced Adverse Events) / Response Rate



Overall Response Rate / Duration of Response



Overall Survival / Disease-Free Survival / Pathological Complete Response

INFORMATION

Tumour type: Genitourinary Cancers

Therapeutic Indication: Nivolumab in combination with cisplatin-based chemotherapy in the first-line setting for the treatment of patients with unresectable or metastatic urothelial carcinoma

Experimental Arm: Nivolumab + Cisplatin-based ChT (Gemcitabine+Cisplatin)

Control Arm: Standard of care chemotherapy (Gemcitabine+Cisplatin)



