

Nivolumab + ipilimumab CheckMate 648

PRELIMINARY SCORE

CURATIVE



NON-CURATIVE



ADJUSTMENTS

Quality of life



Serious and disabling adverse effects



Other adjustments



Nivolumab + ipilimumab CheckMate 648

SCORE

CURATIVE



Overall Survival / Disease-Free Survival / Pathological Complete Response

NON-CURATIVE



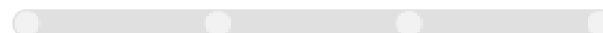
Overall Survival



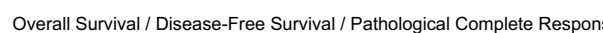
Progression-Free Survival



Non-inferiority (Improved Quality of Life or Reduced Adverse Events) / Response Rate



Overall Response Rate / Duration of Response



Overall Survival / Disease-Free Survival / Pathological Complete Response

INFORMATION

Tumour type: Gastrointestinal Cancers
 Therapeutic Indication: First-line treatment of adult patients with unresectable advanced, recurrent or metastatic oesophageal squamous cell carcinoma with tumour cell PD-L1 expression $\geq 1\%$
 Experimental Arm: Nivolumab + ipilimumab
 Control Arm: ChT



