

Nivolumab CheckMate 649

PRELIMINARY SCORE

CURATIVE



NON-CURATIVE



ADJUSTMENTS

Quality of life



Serious and disabling adverse effects



Other adjustments



Nivolumab CheckMate 649

SCORE

CURATIVE



Overall Survival / Disease-Free Survival / Pathological Complete Response

NON-CURATIVE



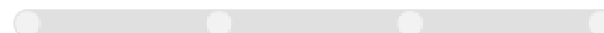
Overall Survival



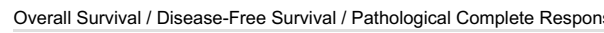
Progression-Free Survival



Non-inferiority (Improved Quality of Life or Reduced Adverse Events) / Response Rate



Overall Response Rate / Duration of Response



Overall Survival / Disease-Free Survival / Pathological Complete Response

INFORMATION

Tumour type: Gastrointestinal Cancers

Therapeutic Indication: First-line treatment for patients with HER2-negative advanced or metastatic gastric, gastroesophageal junction or oesophageal adenocarcinoma whose tumours express PD-L1 with a CPS ≥ 5

Experimental Arm: Nivolumab + Fluoropyrimidine + platinum ChT (FOLFOX or CAPOX)

Control Arm: ChT (FOLFOX or CAPOX)



