

Nivolumab CheckMate 577

PRELIMINARY SCORE

CURATIVE



NON-CURATIVE



ADJUSTMENTS

Quality of life



Serious and disabling adverse effects



Other adjustments



Nivolumab CheckMate 577

SCORE

CURATIVE



Overall Survival / Disease-Free Survival / Pathological Complete Response

NON-CURATIVE



Overall Survival



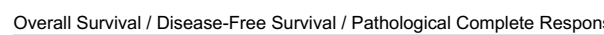
Progression-Free Survival



Non-inferiority (Improved Quality of Life or Reduced Adverse Events) / Response Rate



Overall Response Rate / Duration of Response



Overall Survival / Disease-Free Survival / Pathological Complete Response

INFORMATION

Tumour type: Gastrointestinal Cancers
 Therapeutic Indication: Adjuvant therapy for adult patients with oesophageal or gastroesophageal junction cancer who have residual pathologic disease following prior neoadjuvant chemoradiotherapy
 Experimental Arm: Nivolumab
 Control Arm: Placebo



