

Nivolumab CheckMate141

PRELIMINARY SCORE

CURATIVE



NON-CURATIVE



ADJUSTMENTS

Quality of life



Serious and disabling adverse effects



Less serious adverse events observed

Other adjustments



Nivolumab CheckMate141

SCORE

CURATIVE

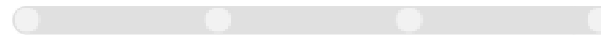


Overall Survival / Disease-Free Survival / Pathological Complete Response

NON-CURATIVE



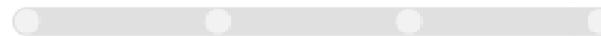
Overall Survival



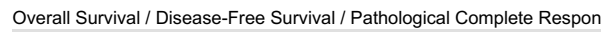
Progression-Free Survival



Non-inferiority (Improved Quality of Life or Reduced Adverse Events) / Response Rate



Overall Response Rate / Duration of Response



Overall Survival / Disease-Free Survival / Pathological Complete Response

INFORMATION

Tumour type: Head and neck cancer

Therapeutic Indication: As monotherapy is indicated for the treatment of recurrent or metastatic squamous cell cancer of the head and neck in adults progressing on or after platinum based therapy

Experimental Arm: Nivolumab

Control Arm: Investigator choice (methotrexate or cetuximab or docetaxel)



