

Abiraterone LATITUDE

PRELIMINARY SCORE

CURATIVE



NON-CURATIVE



ADJUSTMENTS

Quality of life



Not qualified for an ESMO-MCBS credit



Serious and disabling adverse effects



Other adjustments



Abiraterone LATITUDE

SCORE

CURATIVE

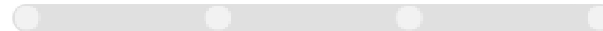


Overall Survival / Disease-Free Survival / Pathological Complete Response

NON-CURATIVE



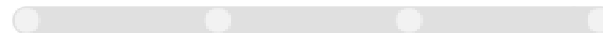
Overall Survival



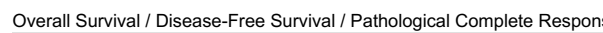
Progression-Free Survival



Non-inferiority (Improved Quality of Life or Reduced Adverse Events) / Response Rate



Overall Response Rate / Duration of Response



Overall Survival / Disease-Free Survival / Pathological Complete Response

INFORMATION

Tumour type: Genitourinary Cancers

Therapeutic Indication: Indicated with prednisone or prednisolone for the treatment of newly diagnosed high risk metastatic hormone sensitive prostate cancer (mHSPC) in adult men

Experimental Arm: Abiraterone + Prednisone + ADT (androgen deprivation therapy)

Control Arm: ADT + placebo



