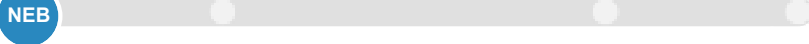


Nivolumab CheckMate 238

PRELIMINARY SCORE

CURATIVE



NON-CURATIVE



ADJUSTMENTS

Quality of life



Serious and disabling adverse effects



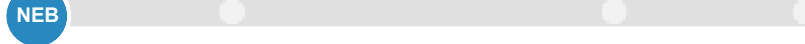
Other adjustments



Nivolumab CheckMate 238

SCORE

CURATIVE

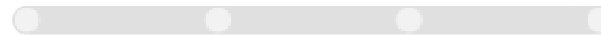


Overall Survival / Disease-Free Survival / Pathological Complete Response

NON-CURATIVE



Overall Survival



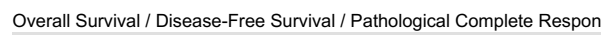
Progression-Free Survival



Non-inferiority (Improved Quality of Life or Reduced Adverse Events) / Response Rate



Overall Response Rate / Duration of Response



Overall Survival / Disease-Free Survival / Pathological Complete Response

INFORMATION

Tumour type: Skin Cancers
 Therapeutic Indication: Adjuvant treatment of adults and adolescents 12 years of age and older with Stage IIB or IIC melanoma, or melanoma with involvement of lymph nodes or metastatic disease who have undergone complete resection
 Experimental Arm: Nivolumab
 Control Arm: Ipilimumab 10mg/kg



