

Sunitinib

### PRELIMINARY SCORE

**CURATIVE**



**NON-CURATIVE**



### ADJUSTMENTS

**Quality of life**



No QoL benefit



**Serious and disabling adverse effects**



**Other adjustments**



Only improved PFS mature data shows no OS advantage and no improved QoL



Sunitinib

### FINAL SCORE

**CURATIVE**



Overall Survival / Disease-Free Survival / Pathological Complete Response

**NON-CURATIVE**



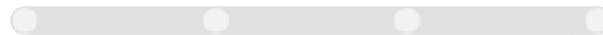
Overall Survival



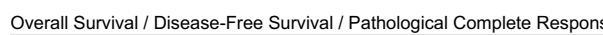
Progression-Free Survival



Non-inferiority (Improved Quality of Life or Reduced Adverse Events) / Response Rate



Overall Response Rate / Duration of Response



Overall Survival / Disease-Free Survival / Pathological Complete Response

**INFORMATION**

Tumour type: Endocrine Tumours  
 Therapeutic Indication: Treatment of unresectable or metastatic, well differentiated pancreatic neuroendocrine tumours with disease progression in adults  
 Experimental Arm: Sunitinib  
 Control Arm: Placebo



