

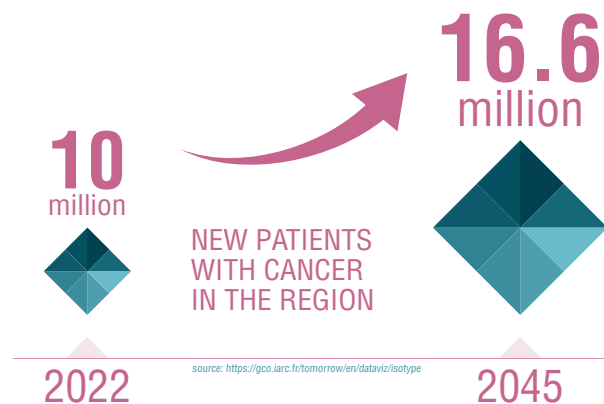
ESMO Patient Engagement Summit 2024

Call to Action: Advocating together for equal access to optimal care for all patients with cancer in the Asia-Pacific Region

The delivery of innovative, sustainable and equitable cancer care in the diverse Asia-Pacific region can only be achieved if the views of patients with cancer are central in both the development and implementation of healthcare policies. ESMO is committed to working with patient advocates to help deliver patient-centric policies across the region and calls on policy makers to collaborate with us to ensure that the patient voice is reflected in policies which:



- 
ACCESS TO DIAGNOSIS & TREATMENT
 Improve access by strengthening early detection initiatives and making treatments more affordable and widely available, especially for underserved populations.
- 
FOR PATIENTS, WITH PATIENTS
 Optimal cancer care for all patients in the Asia-Pacific region, wherever they reside. The creation or enhancement of comprehensive national cancer plans, crucial for coordinating efforts, effectively allocating resources, and ensuring high-quality, equitable cancer care for all patients.
- 
PREVENTION
 Prioritise preventative strategies to control cancer and allow our members to treat those cancers which cannot, yet, be averted.
- 
SURVIVORSHIP
 Establish a benchmark for the fair and equal treatment of cancer survivors across the region when accessing financial services so that they are treated in the same manner as other people of similar age and socio-demographic characteristics.
- 
LIVING WITH CANCER
 Enhance supportive care through the creation of policies which prioritise patients' physical, emotional, and social needs throughout their cancer journey.
- 
PATIENT PARTICIPATION IN RESEARCH & INNOVATION
 Empower patients by both increasing their understanding of research processes and developing a patient-friendly infrastructure to facilitate their involvement in the development of new innovative treatments.



With over **40,000 members** in 177 countries, having advocated for sustainable cancer care worldwide since 1975, ESMO is ideally placed to share its collective oncological knowledge and experience for the development, implementation and monitoring of evidence-based policies to tackle the scourge of cancer across the Asia-Pacific region.



publicpolicy@esmo.org

