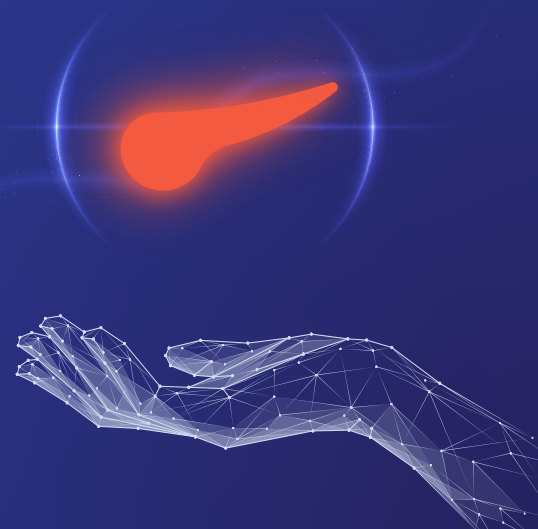


# Pathways to Enhance Patients' Benefits in Metastatic Pancreatic Cancer

Friday, 28<sup>th</sup> June 2024  
13:15 – 14:15 CEST

Room 13A, ICM-International Congress Center, Munich, Germany



13:15 – 13:20

Introduction

**Thomas Seufferlein (Germany)**



13:20 – 13:35

New horizons for metastatic pancreatic cancer patients

**Angela Lamarca (Spain)**



13:35 – 13:45

Recent advancements in the treatment of mPAC, focus on Japanese experience

**Akihiro Ohba (Japan)**



13:45 – 14:00

From evidence to clinical practice

**Davide Melisi (Italy)**

14:00 – 14:10

Panel Discussion

**All faculty**

14:10 – 14:15

Conclusion

**Thomas Seufferlein (Germany)**