



IFEMA
Feria de
Madrid

EMERGENCY AND EVACUATION PLAN INTERNAL ACTION MANUAL

MARCH/2008

EMERGENCY AND EVACUATION PLAN

This Plan pursues the following objectives.

- **Getting to know the building, its installations and the areas of danger which exist.**
- **Getting to know the available means for protection and ensuring the viability of their operation.**
- **Determining the evacuation routes, safety zones and meeting points.**
- **Having personnel who act rapidly and efficiently in the event of an emergency.**
- **Keeping the occupants of the buildings informed about what they should or should not do in the event of an emergency.**

ALL IFEMA PERSONNEL
AND
COOPERATING COMPANIES

Self-Protection Plan–Emergency, Evacuation and Action Measures in the event of an alarm.

What is an EMERGENCY SITUATION? “A breakdown in the normalcy of everyday activity caused by a natural or intentional threat which leads to a situation of imminent risk to the safety of people and/or things.”

ALARM Status → SELF-PROTECTION PLAN Activation → THREAT Assessment → EMERGENCY Situation → EVACUATION

Preventive rules of a general nature

Carefully study the layout maps which identify the Evacuation Routes and Emergency Exits.

Upon accessing the area assigned as your work area, identify the EVACUATION ROUTES / EMERGENCY EXITS / FIRE EXTINGUISHING MEANS AND SYSTEMS and show them to all of the people who report to you.

ACTIONS

If you notice any sign of fire, the presence of a package/container that you suspect might contain explosives, or any anomaly in the protection systems (including fire extinguishers, equipped fire hydrants, blocked emergency exits, defective signposting, etc.), REPORT IT IMMEDIATELY TO THE SAFETY CONTROL CENTRE, BY CALLING 91 722 54 00. Speak slowly with a clear voice, and do not hang up until you are certain that the Safety Control Centre Worker has understood you perfectly. If you have any visitors with you, take them to the nearest emergency exit.

If you have been assigned a walkie-talkie, use it in emergency situations only when indispensable or when you are called by one of the commanders (Emergency Chief, Intervention Chief and/or Area Chief). In the meantime, remain silent and keep listening.

Please remain as calm as possible and keep panic from spreading at all costs.

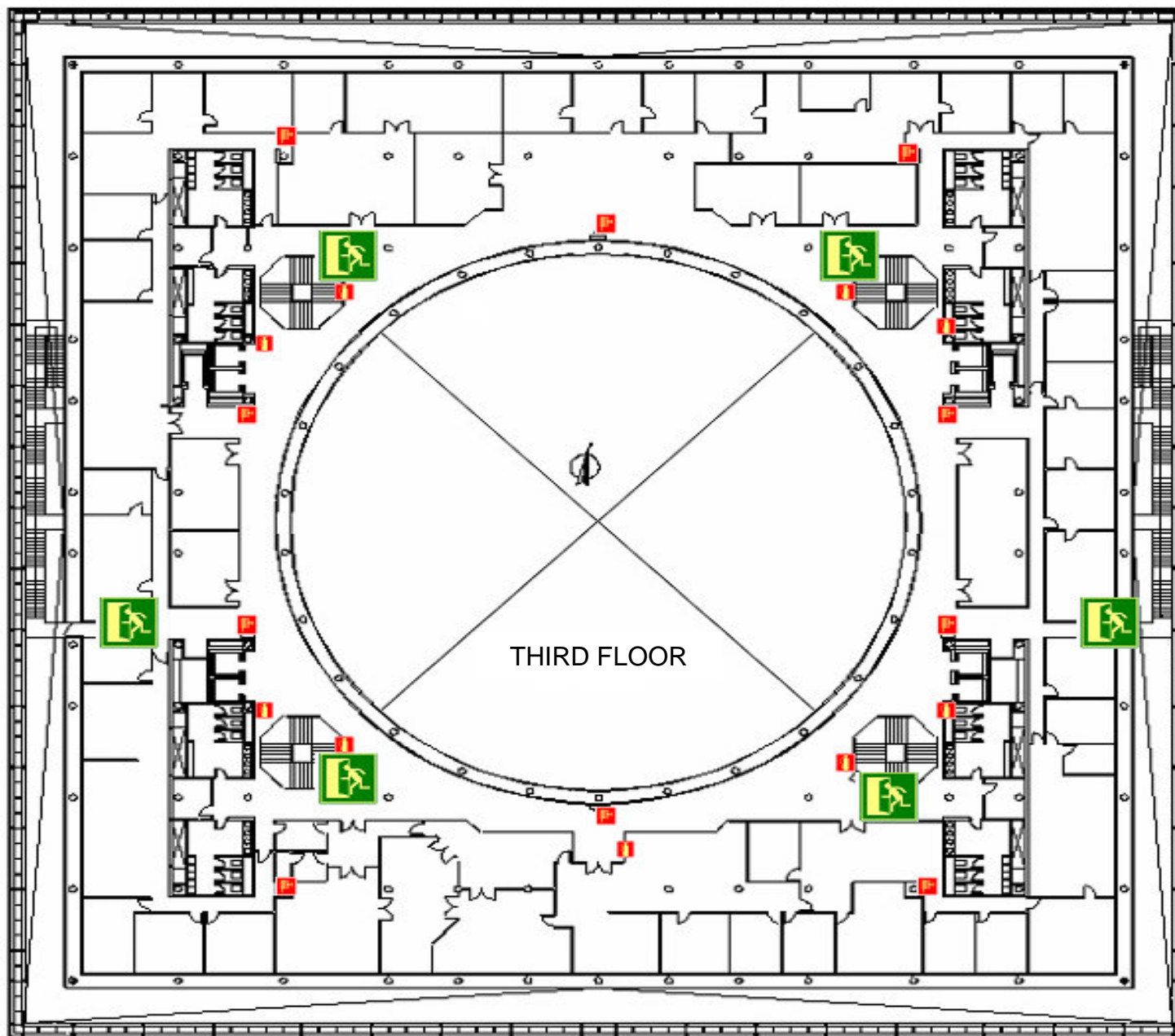
Your own safety and that of the staff members for whom you are responsible depend upon you acting properly.

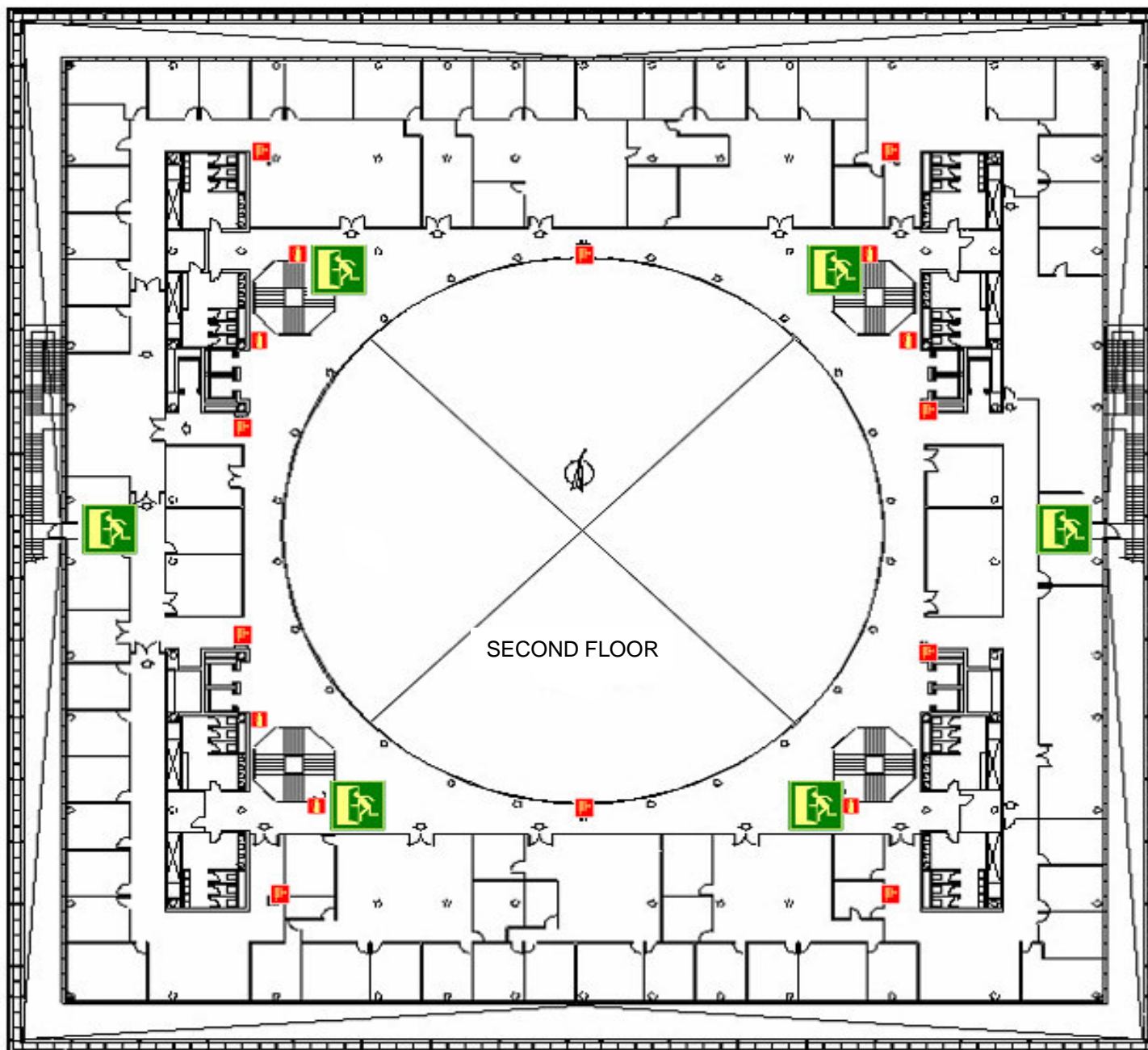
Becoming nervous and panicking are your biggest enemies.

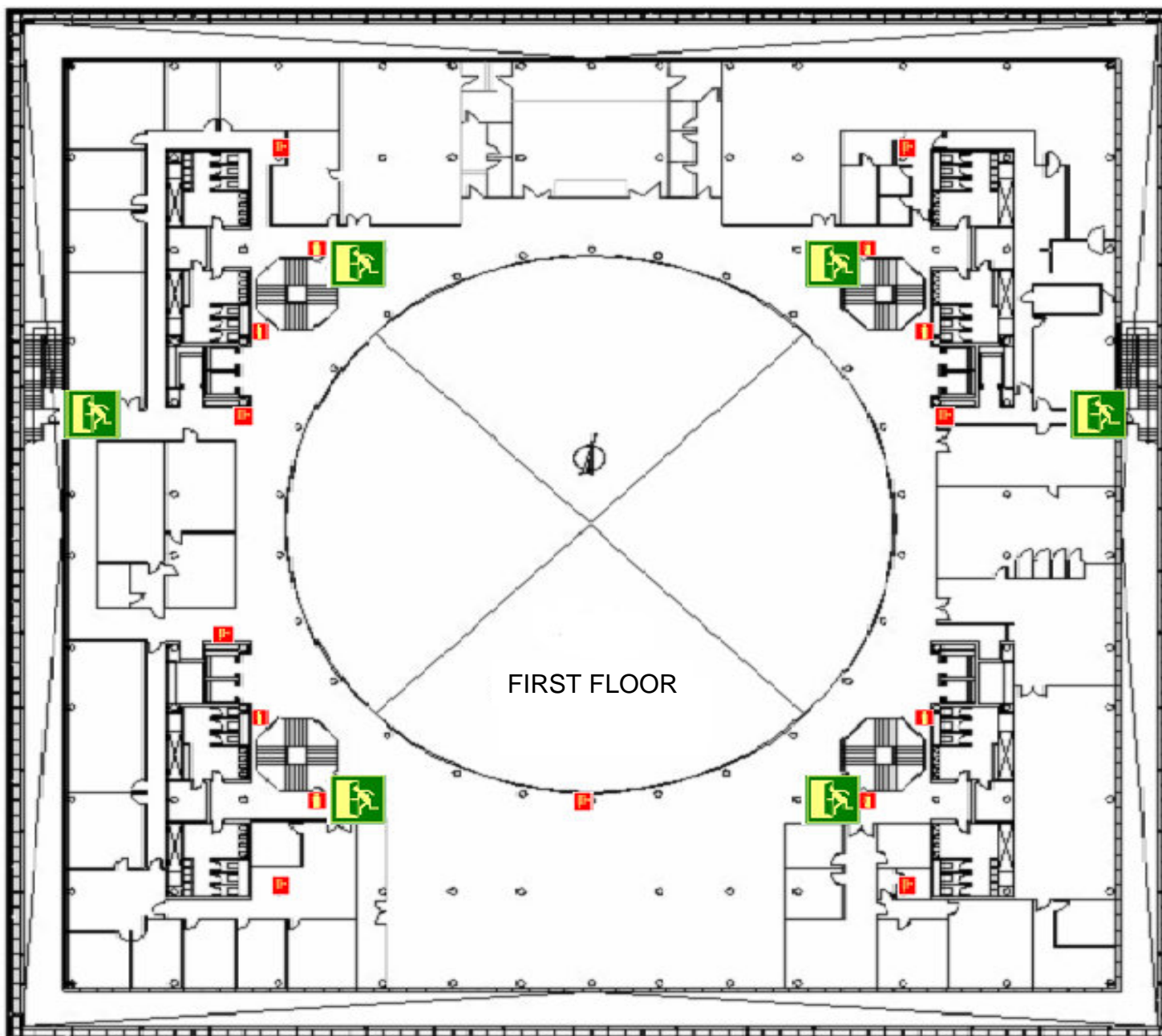


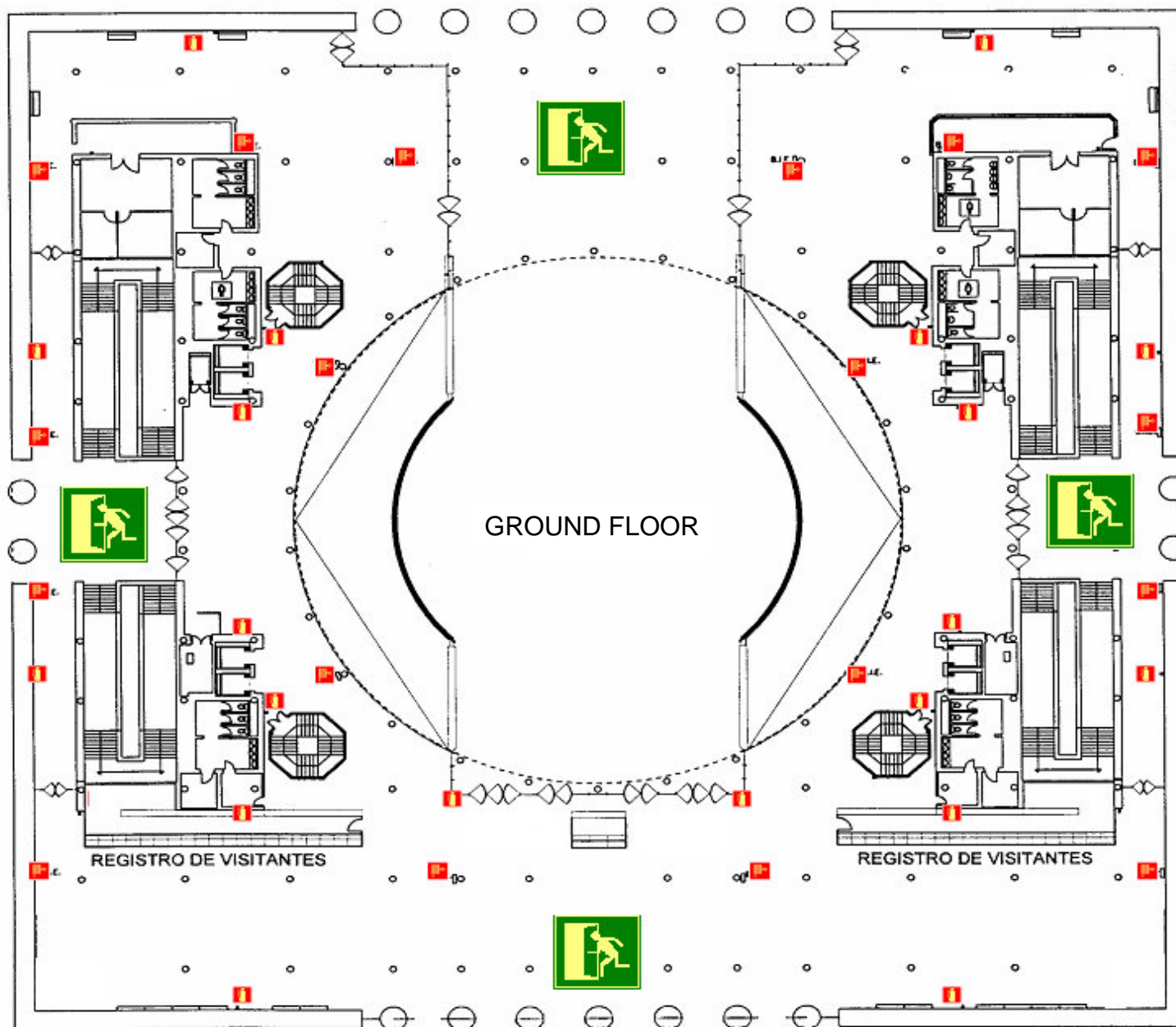
EVACUATION MAPS

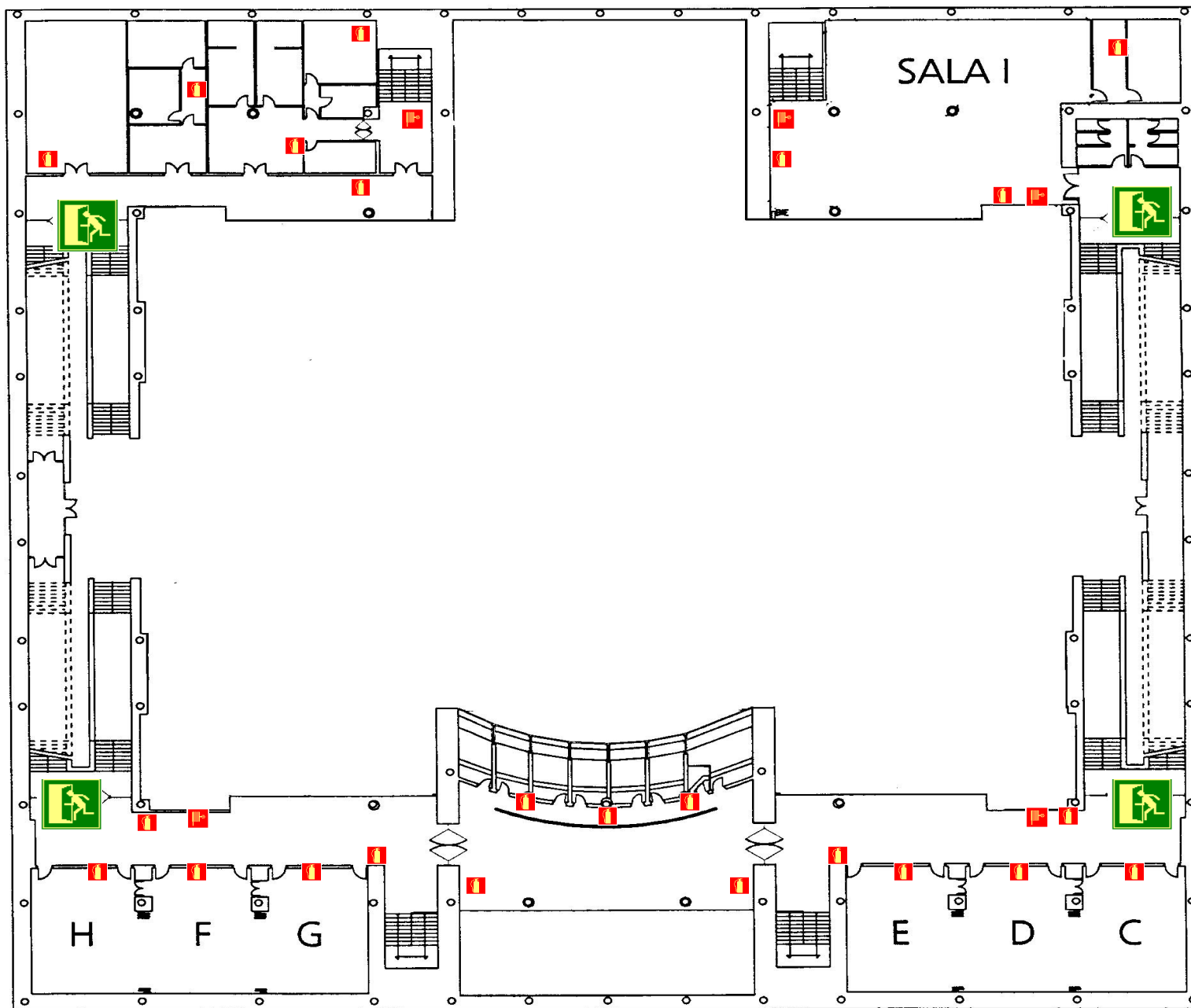
SOUTHERN OFFICE BUILDING



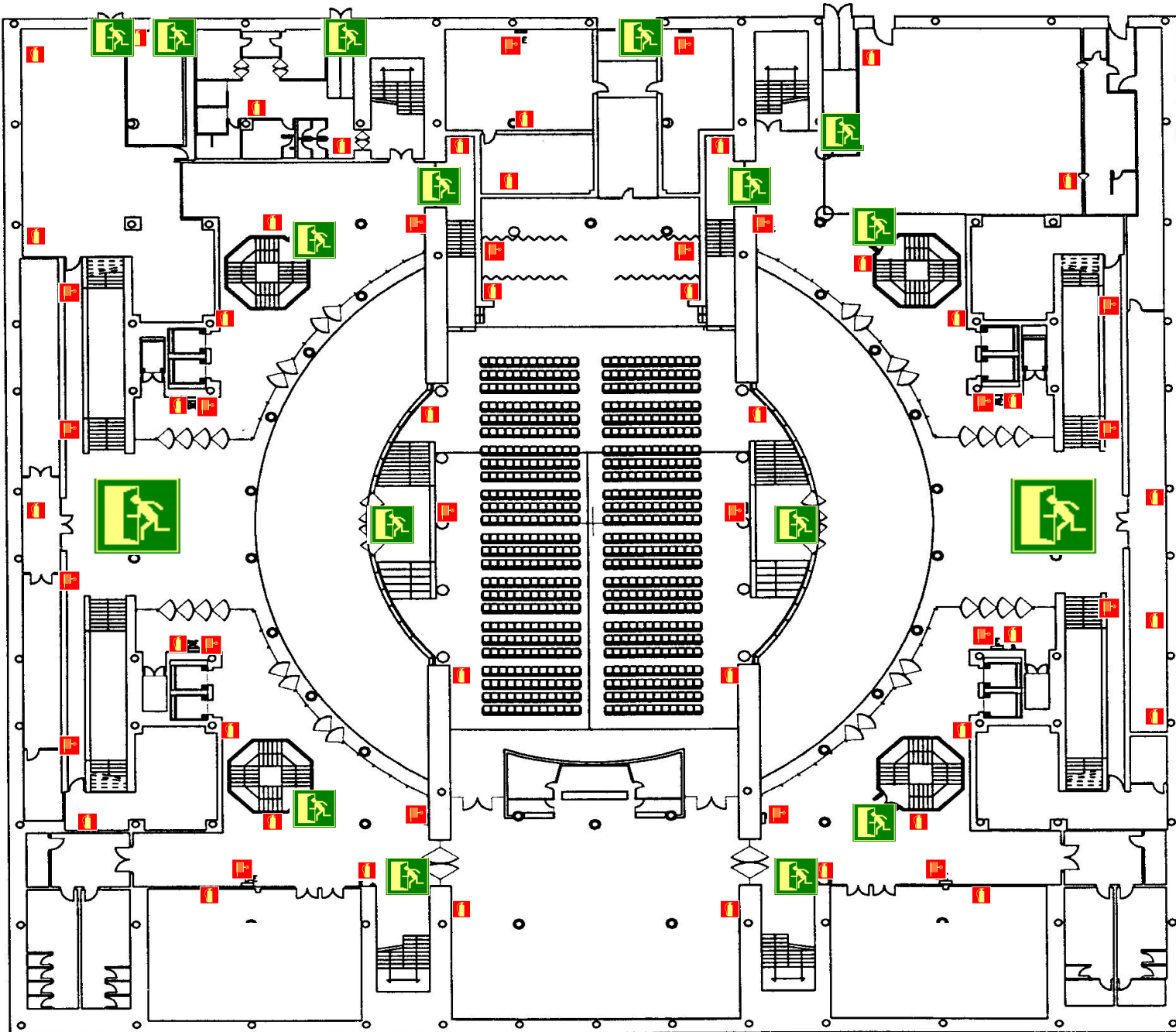








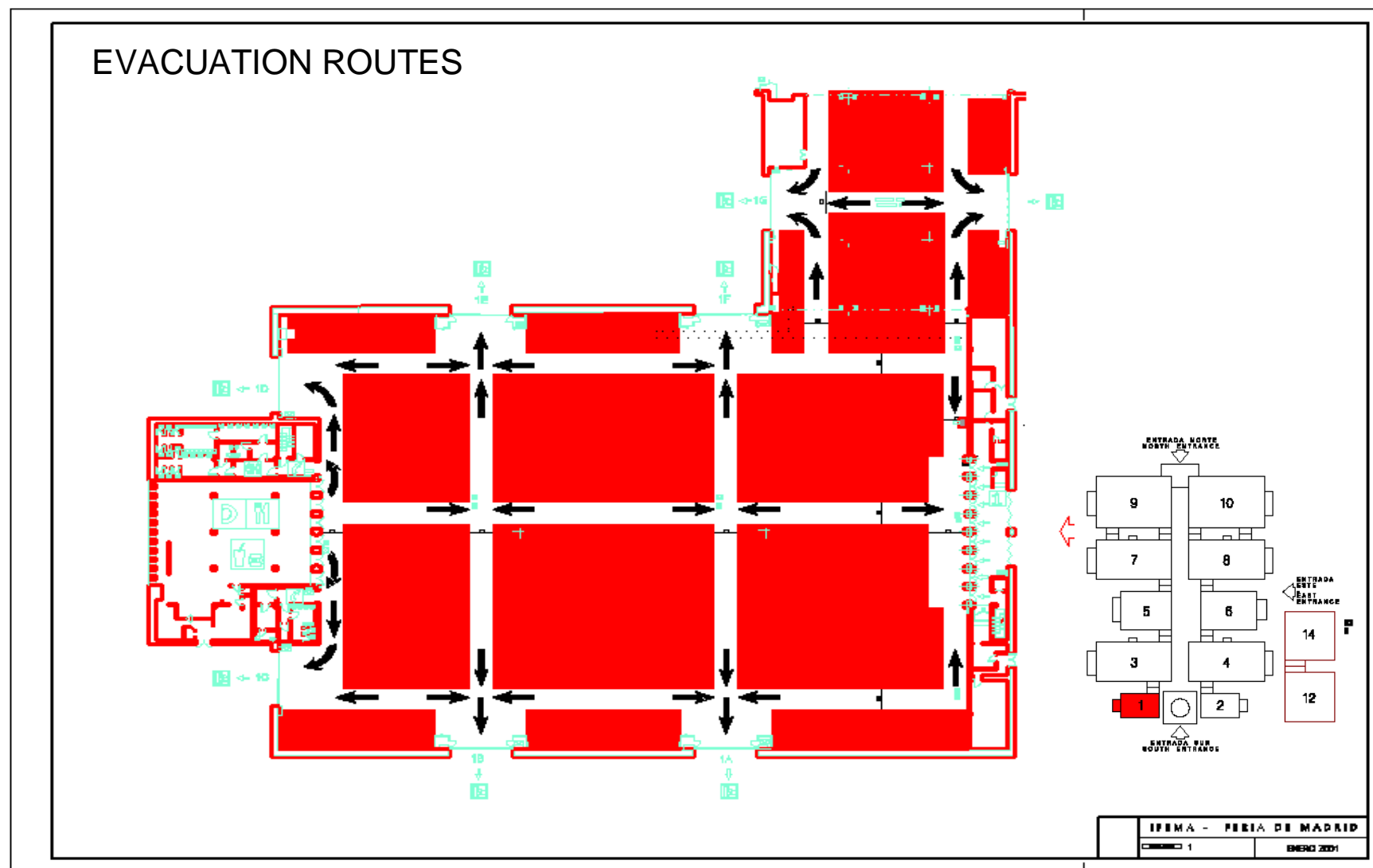
CENTRAL BUILDING - MEZZANINE LEVEL



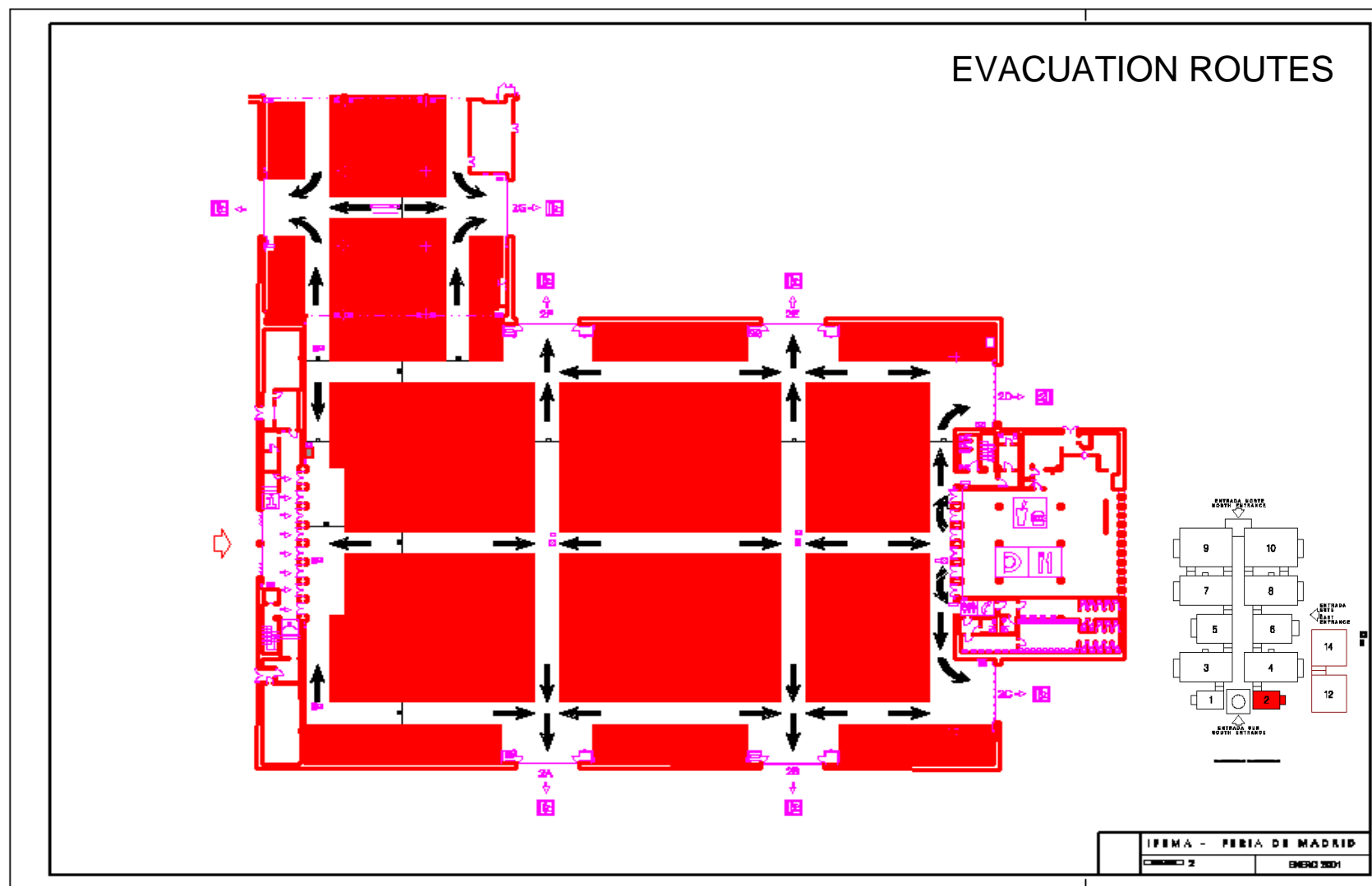
CENTRAL BUILDING – BASEMENT LEVEL

EXHIBITION PAVILIONS

PAVILION N° 1

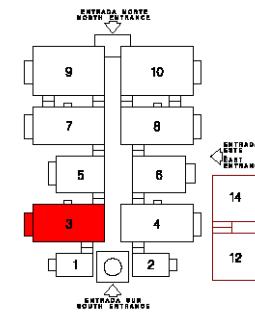
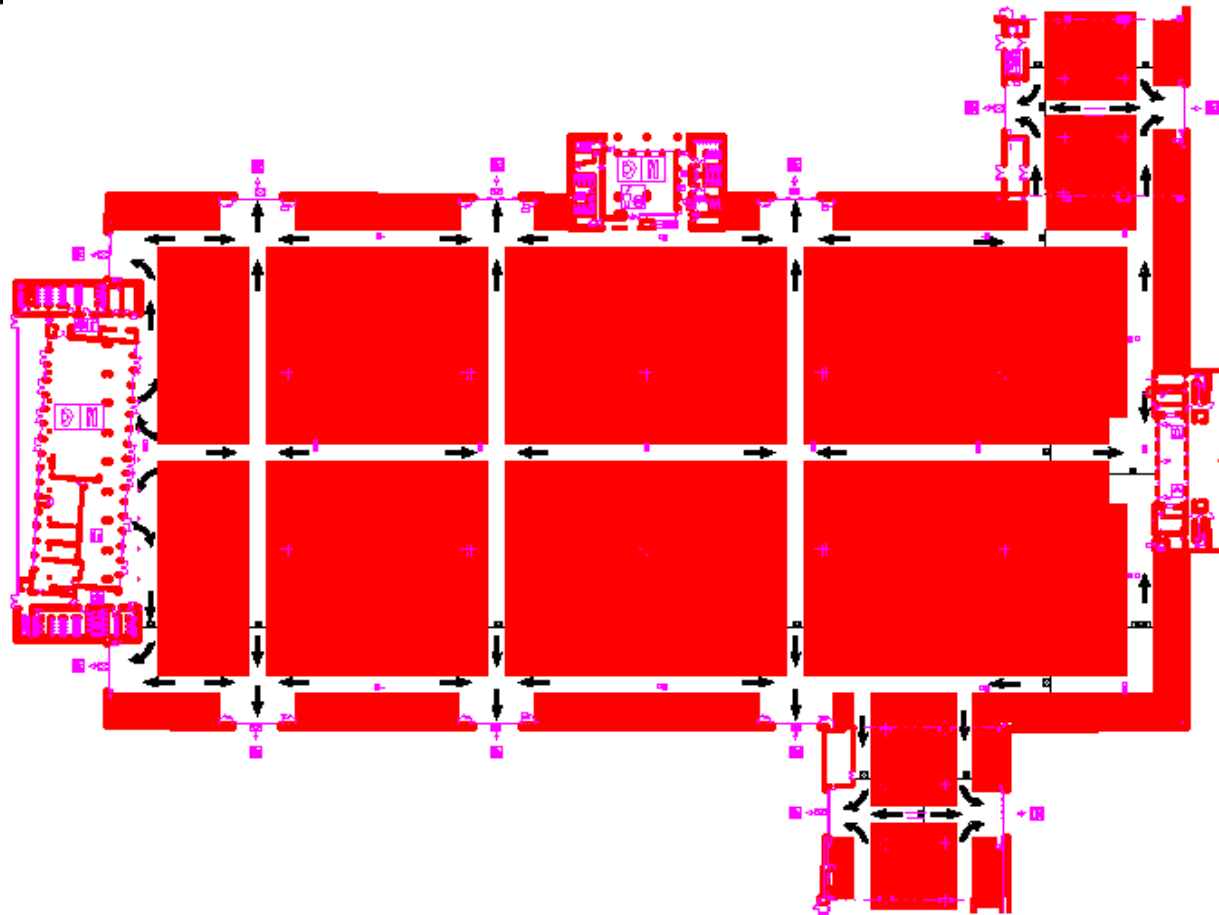


PAVILION N° 2



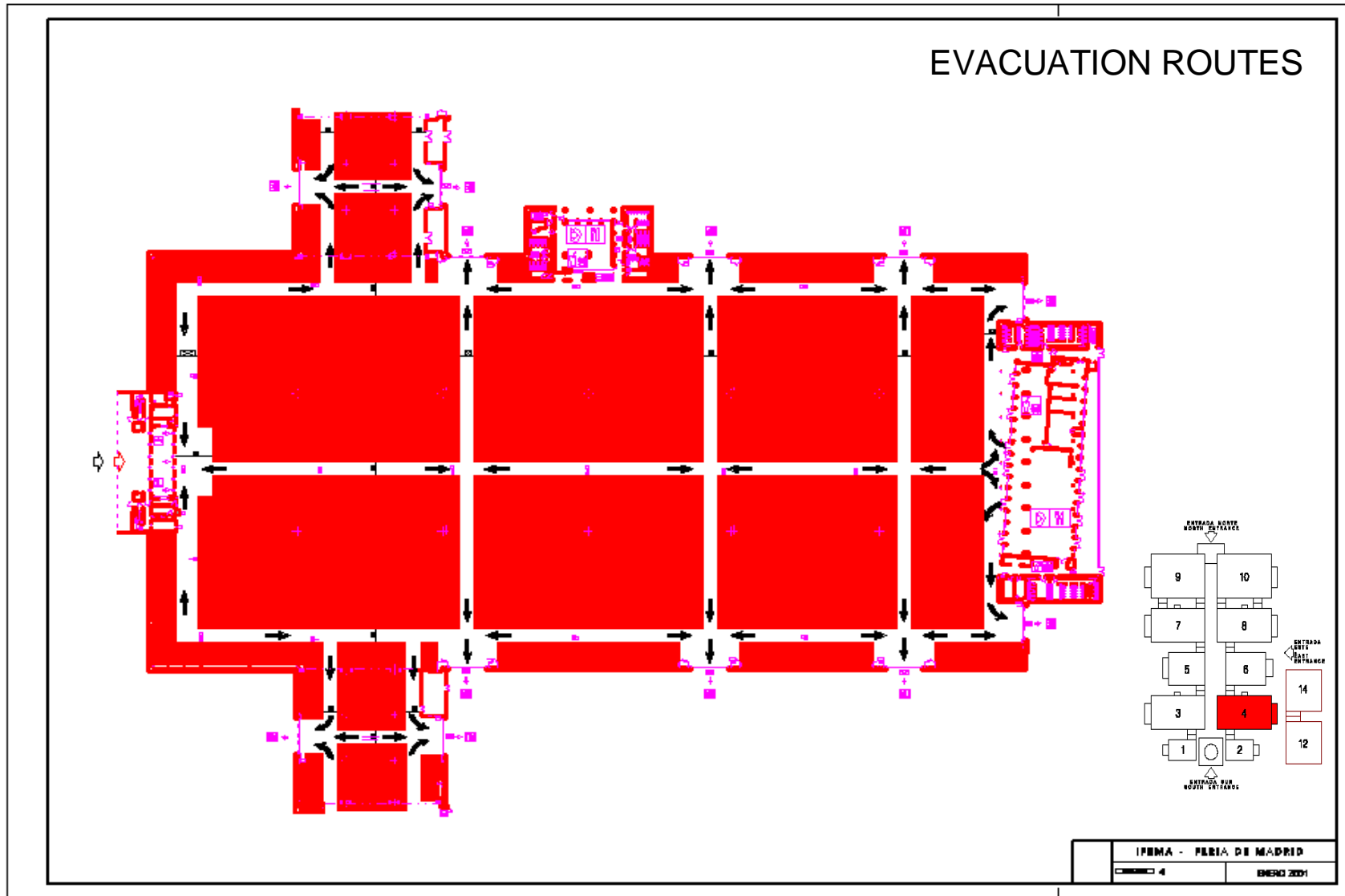
PAVILION N° 3

EVACUATION ROUTES



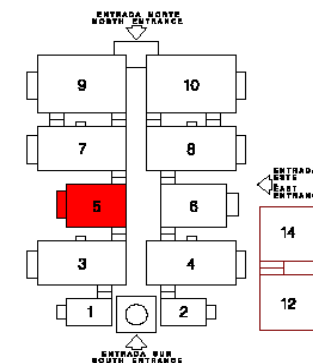
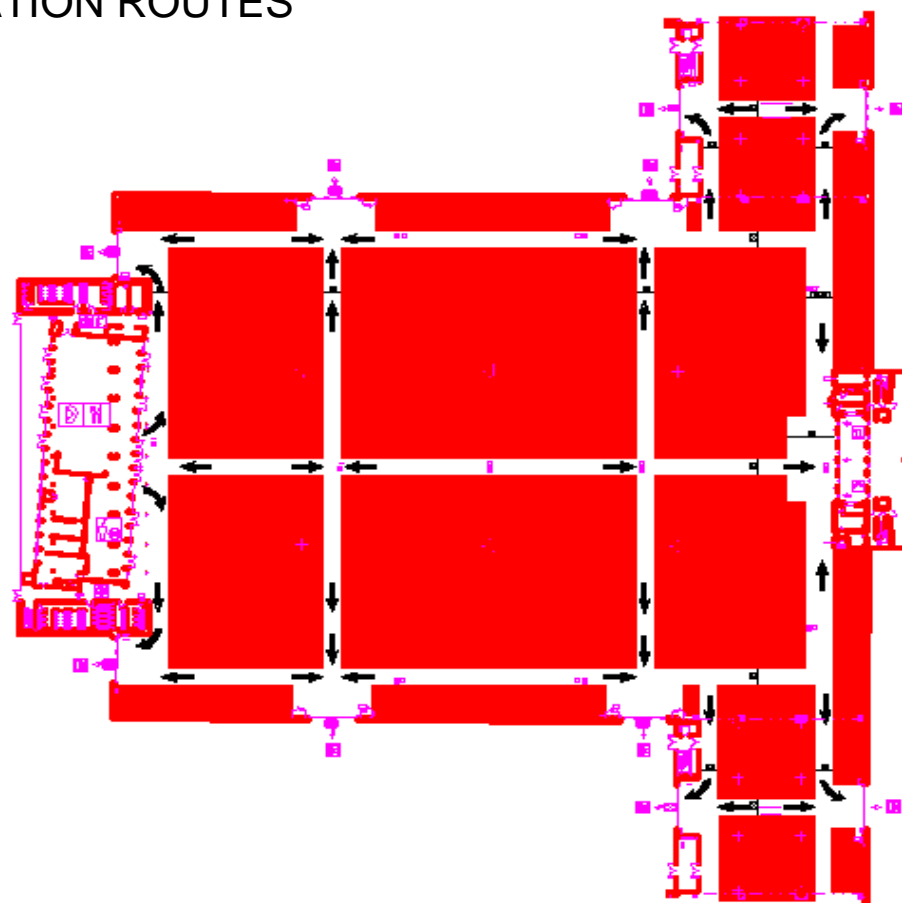
IFEMA - FERIA DE MADRID
ENERO 2001

PAVILION N° 4



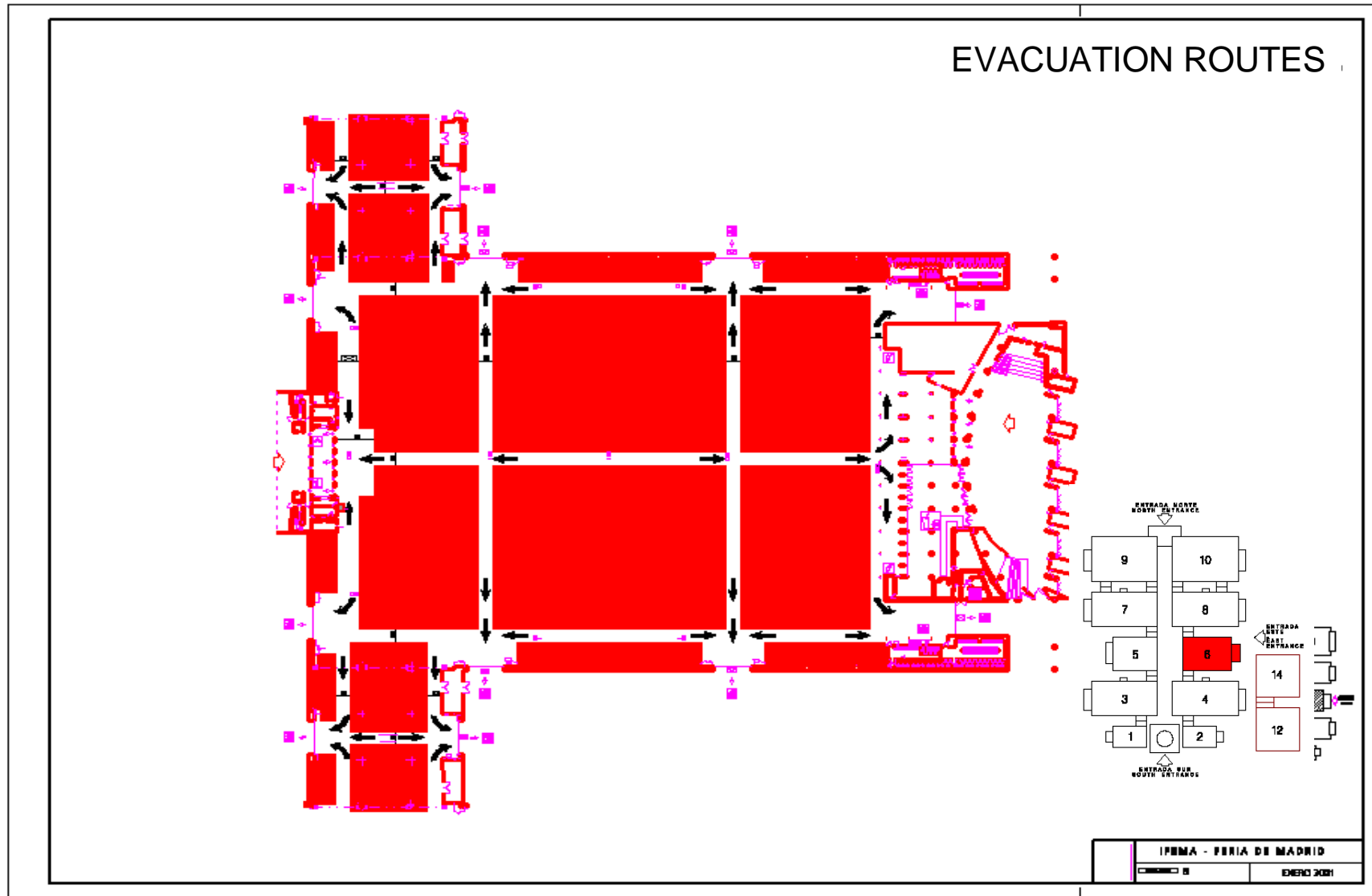
PAVILION N° 5

EVACUATION ROUTES

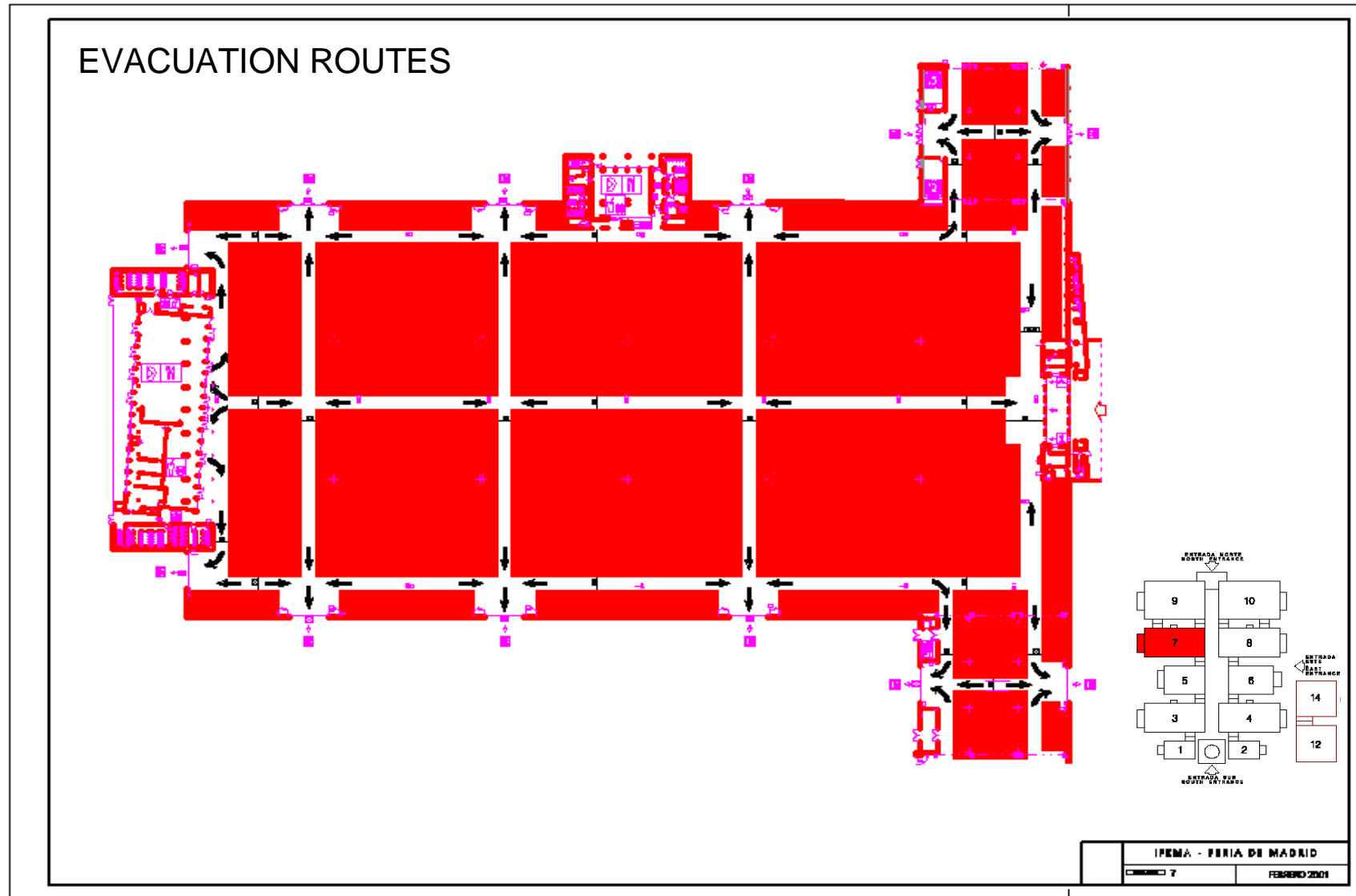


IFEMA - FERIA DE MADRID	
PAVILION 5	ENERG 2001

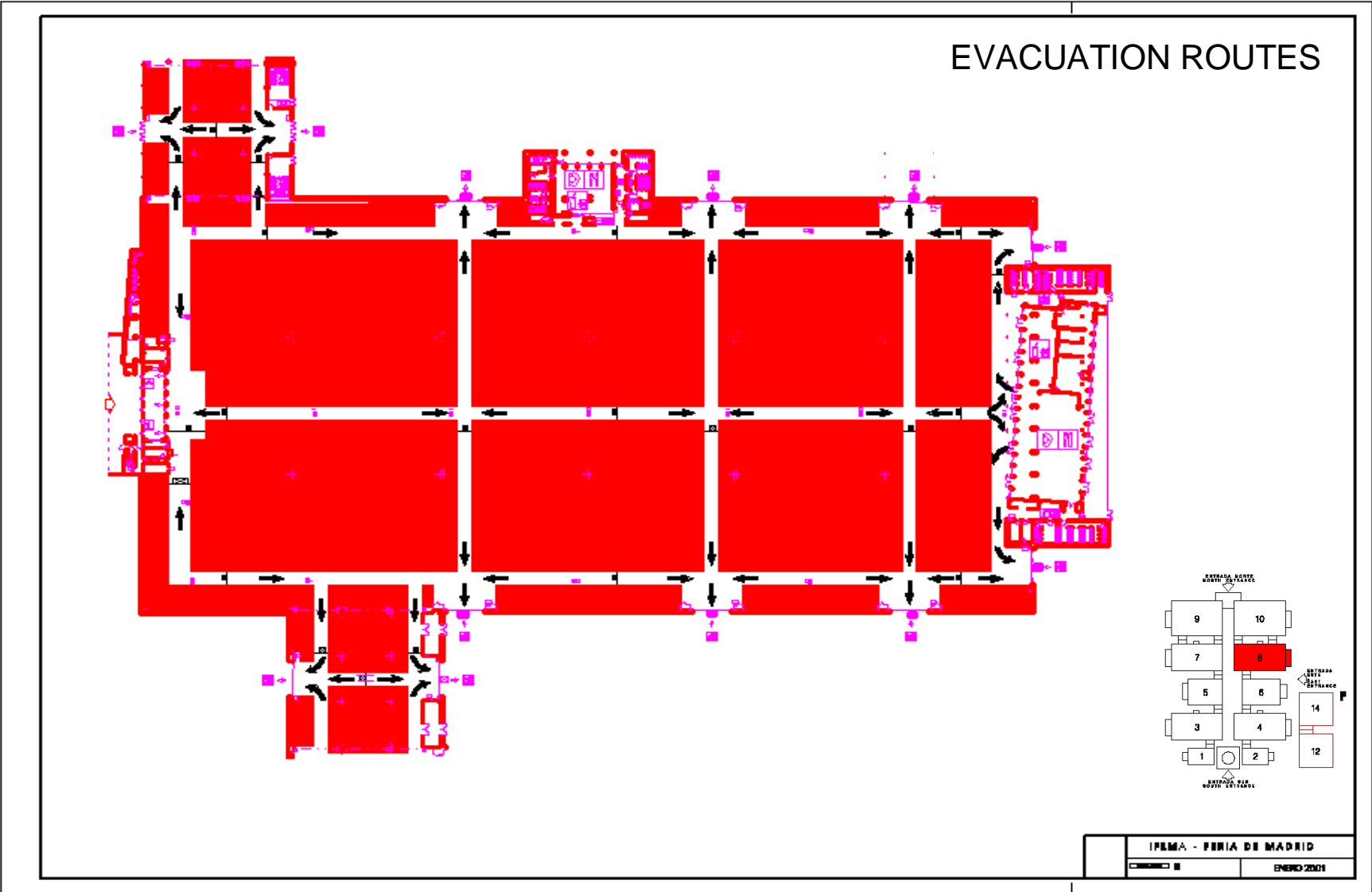
PAVILION N° 6



PAVILION N° 7

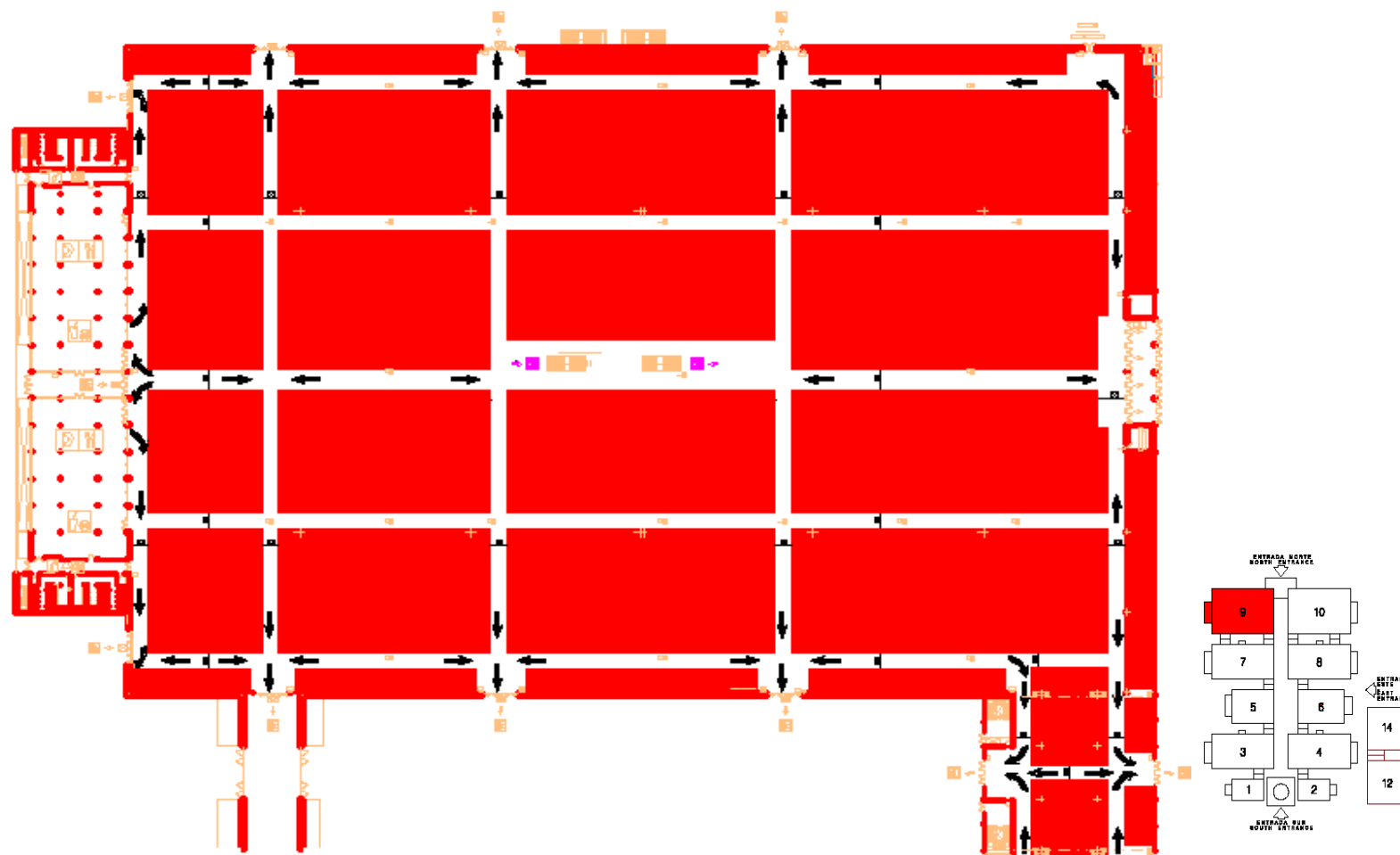


PAVILION N° 8



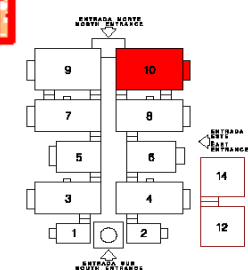
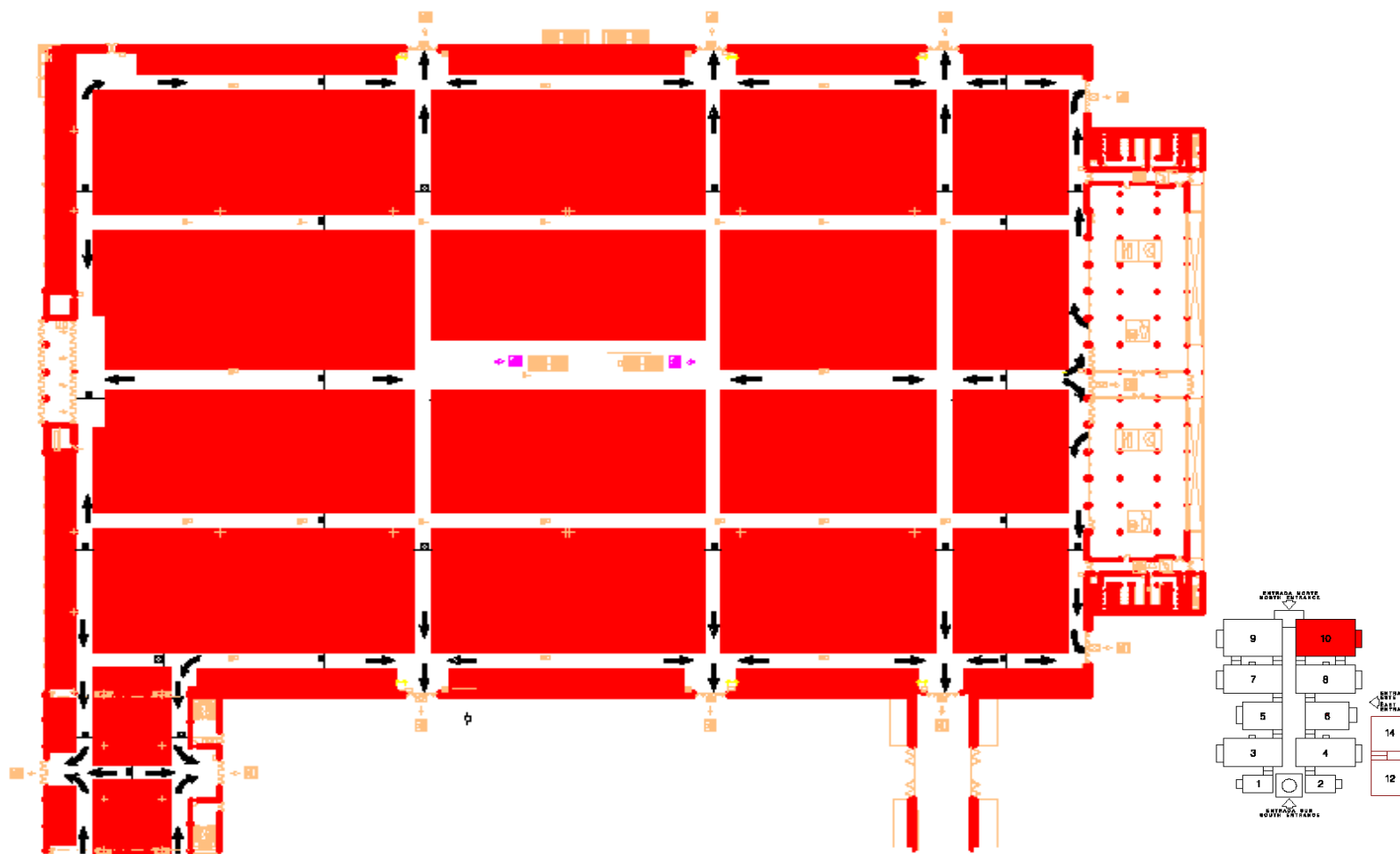
PAVILION N° 9


EVACUATION ROUTES



PAVILION N° 10

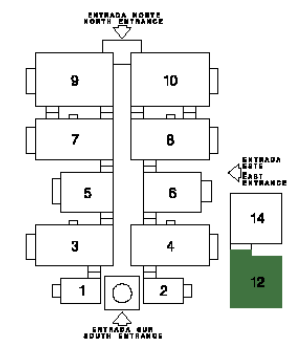
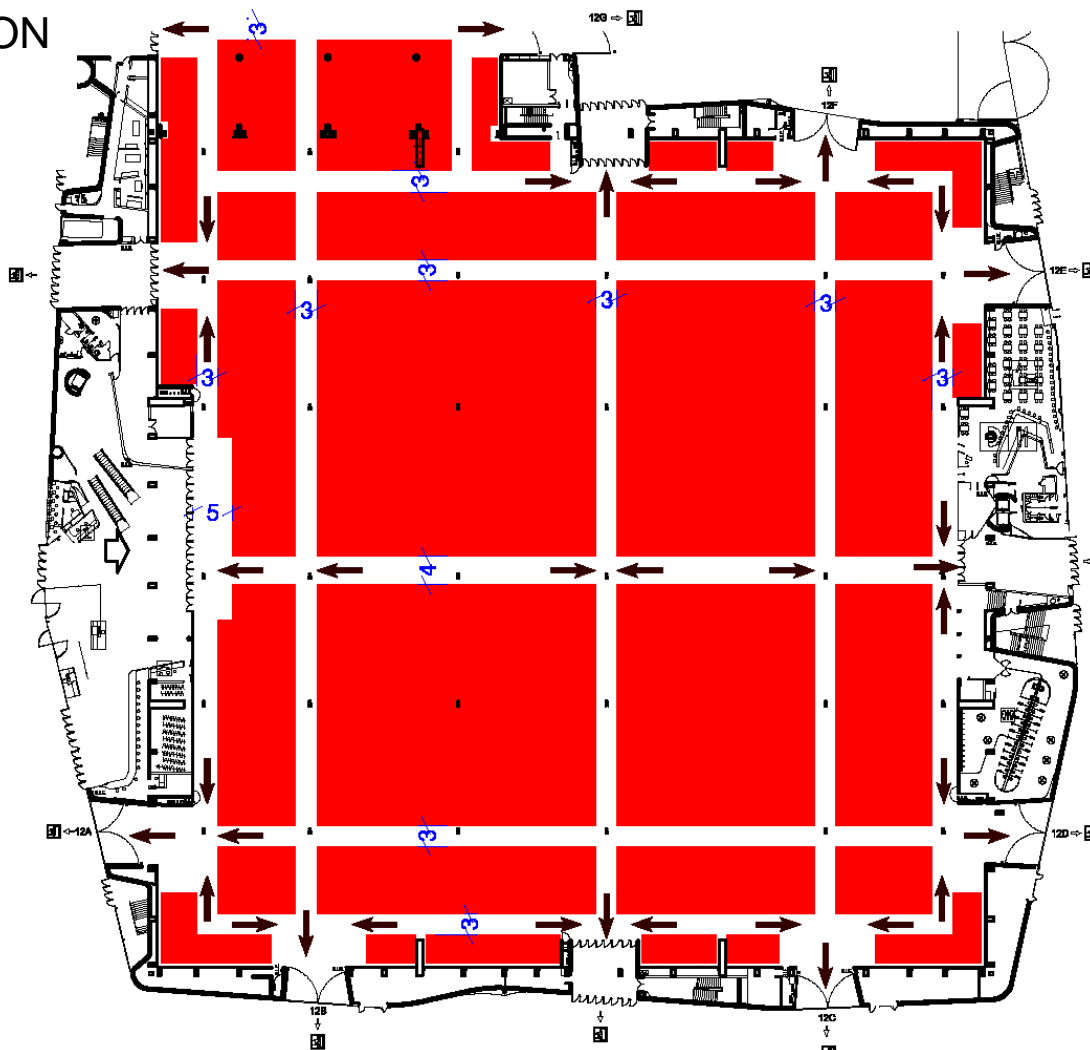
EVACUATION ROUTES





IFEMA - FERIA DE MADRID
 PAVILION 10
 FEBRERO 2001

PAVILION N° 12

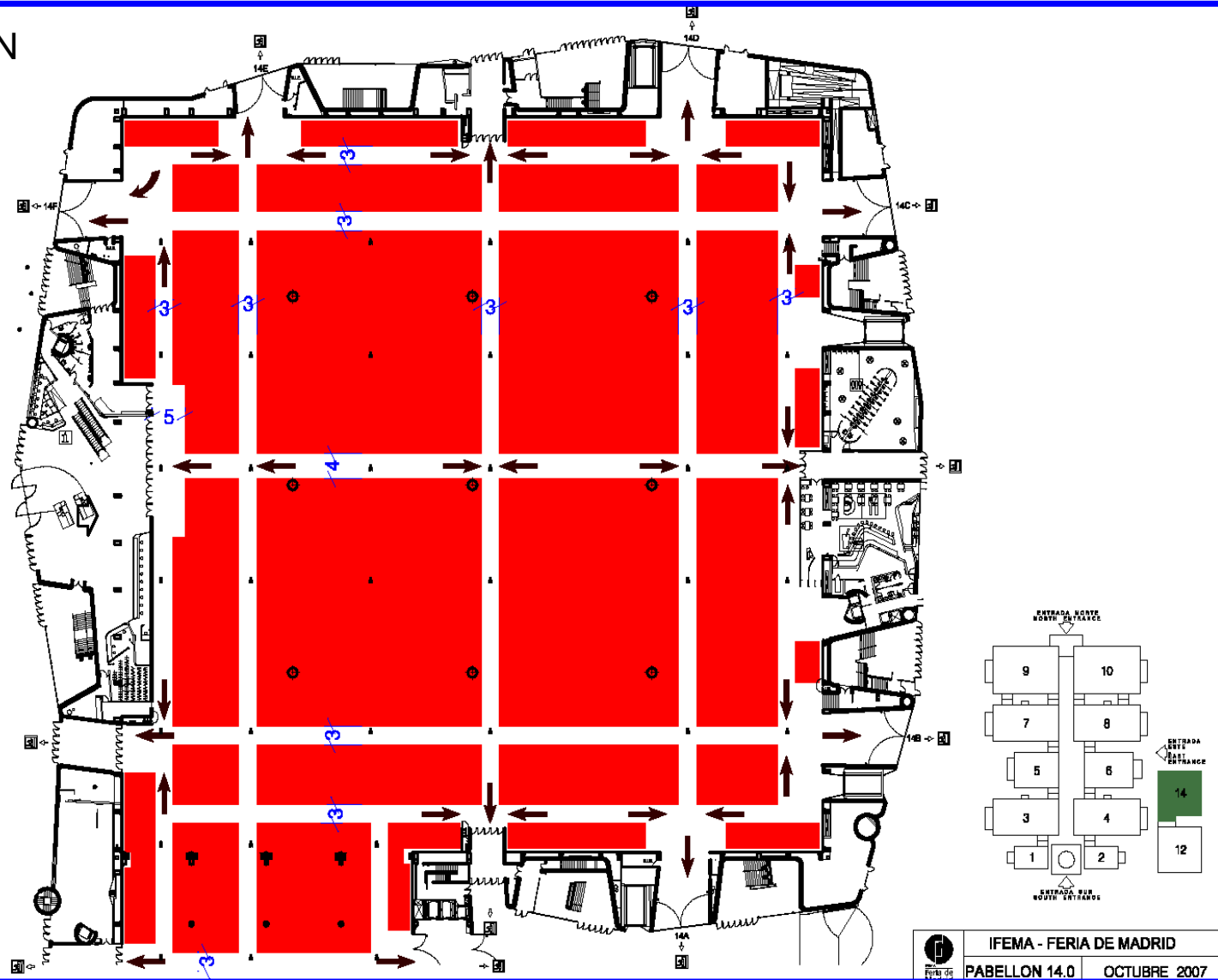
EVACUATION ROUTES



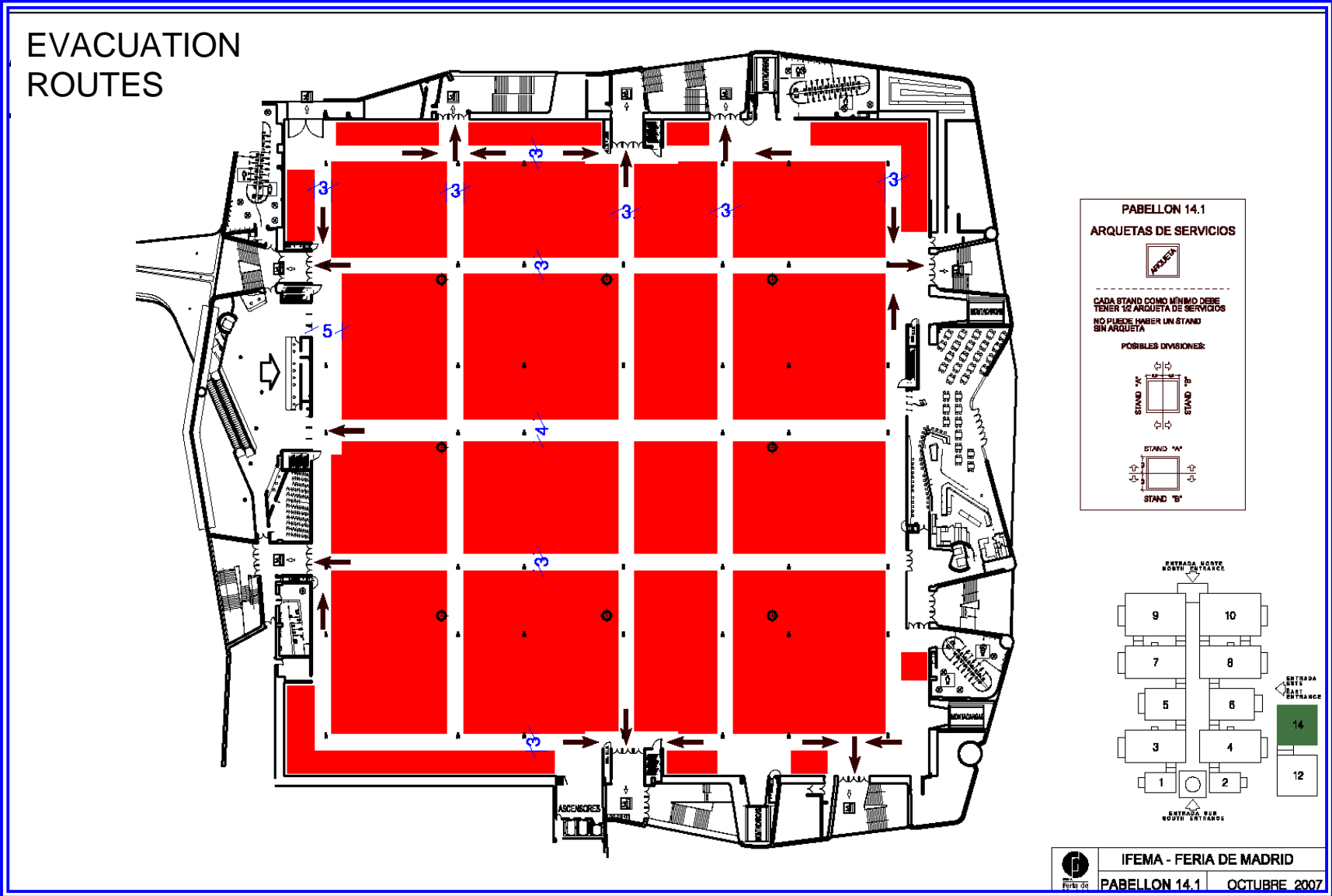

IFEMA - FERIA DE MADRID
PABELLON 12 OCTUBRE 2007

PAVILION N° 14.0

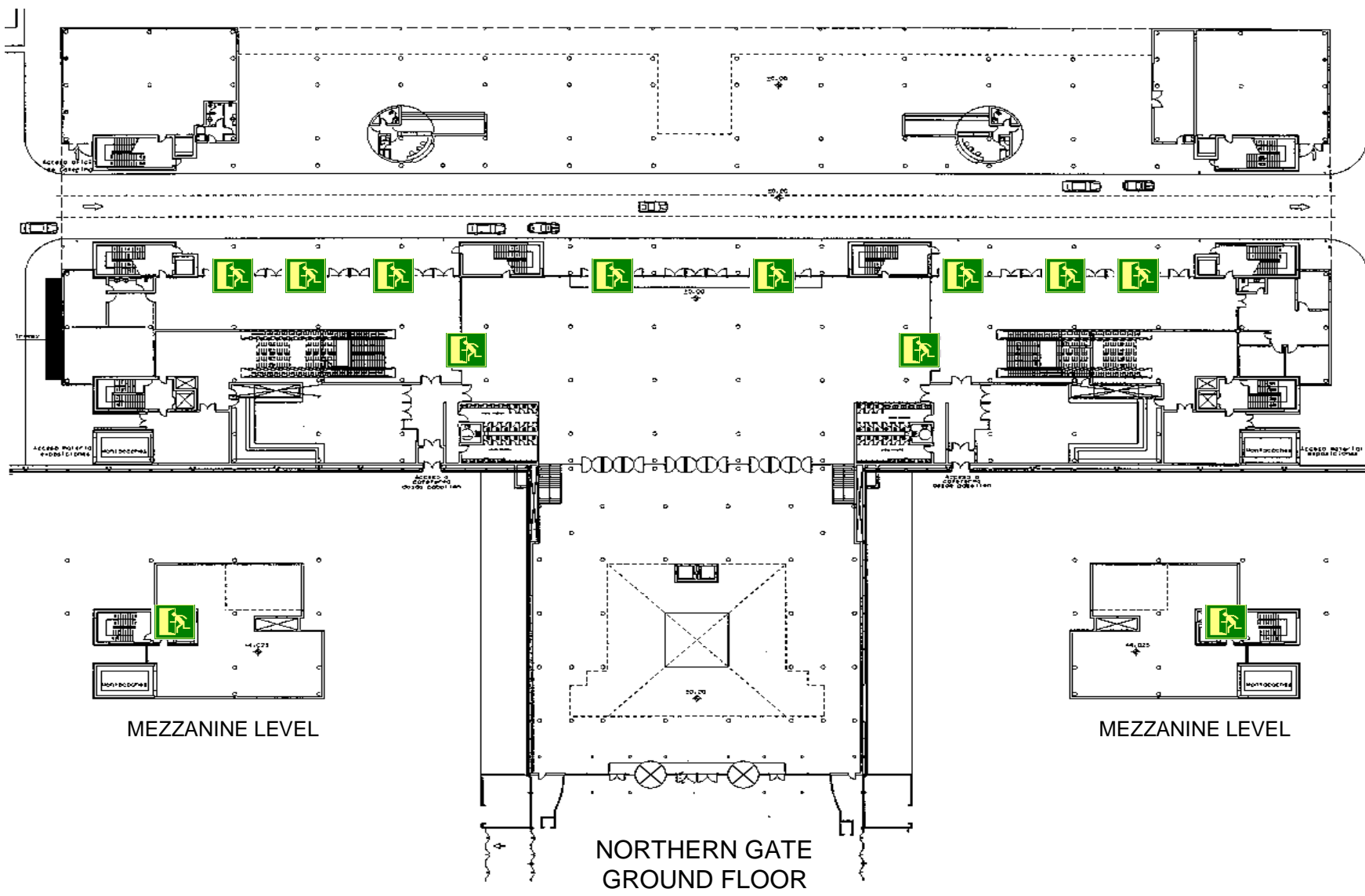
EVACUATION ROUTES

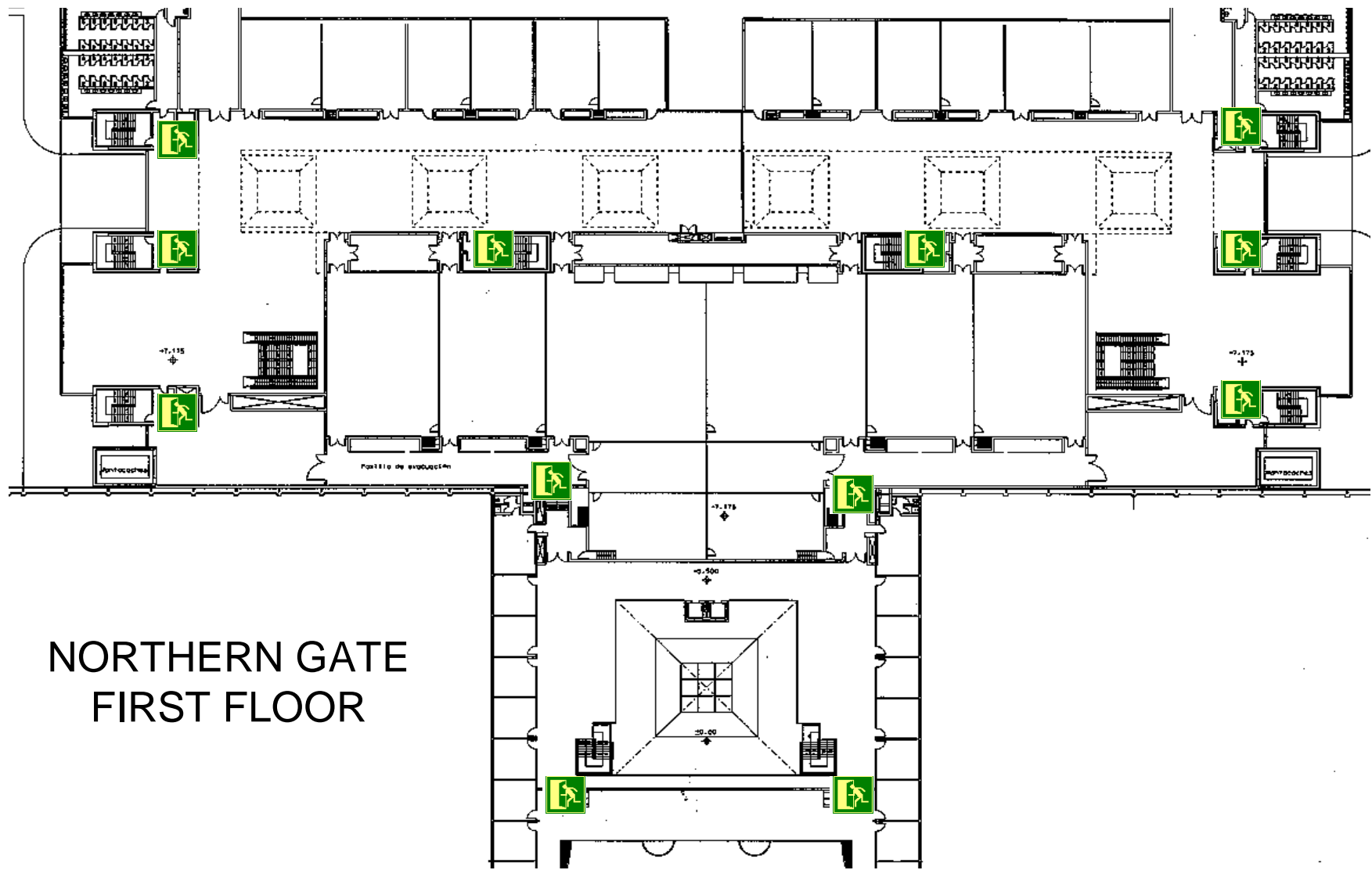


PAVILION N° 14.1



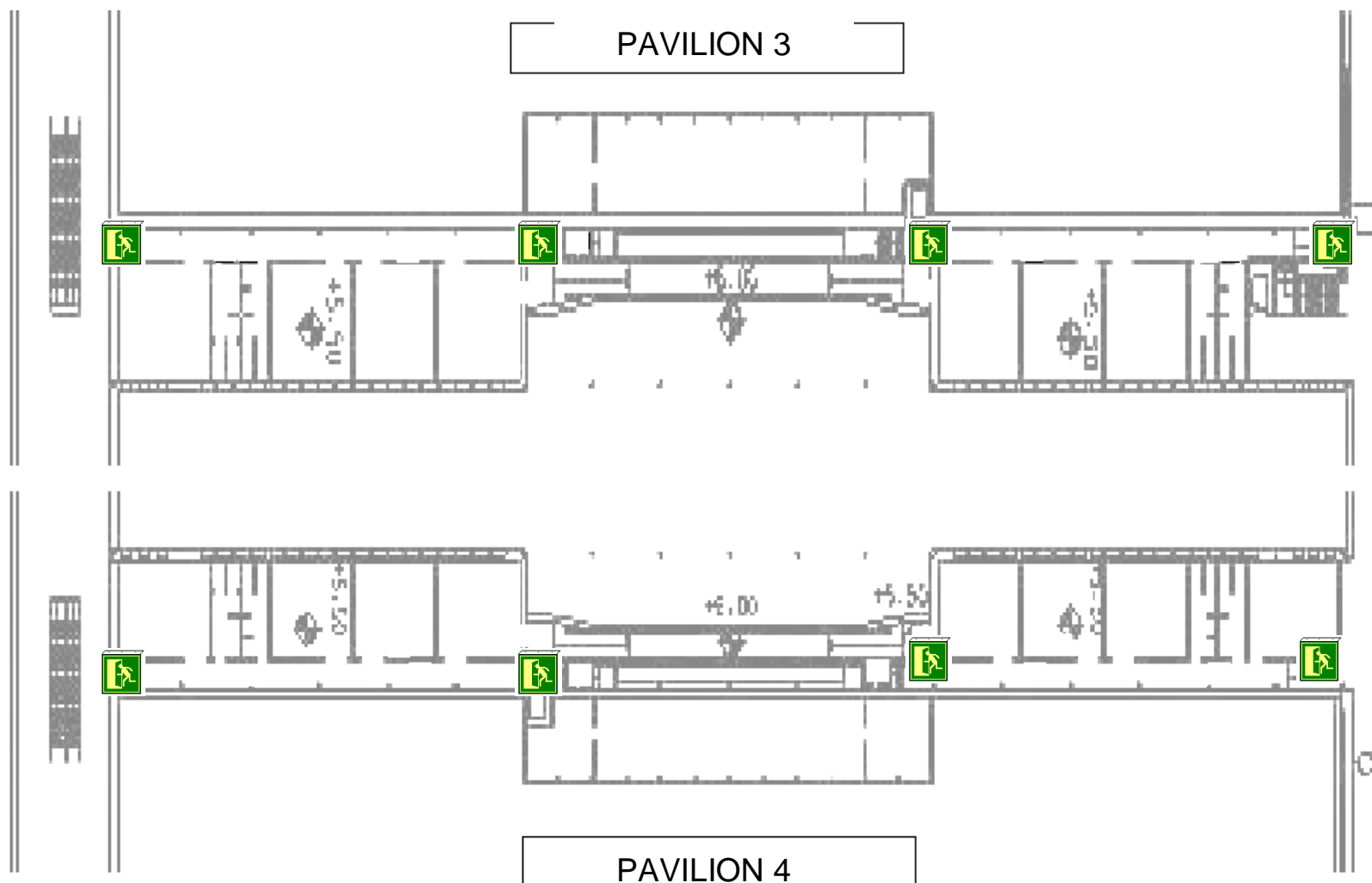
MULTI-PURPOSE BUILDINGS

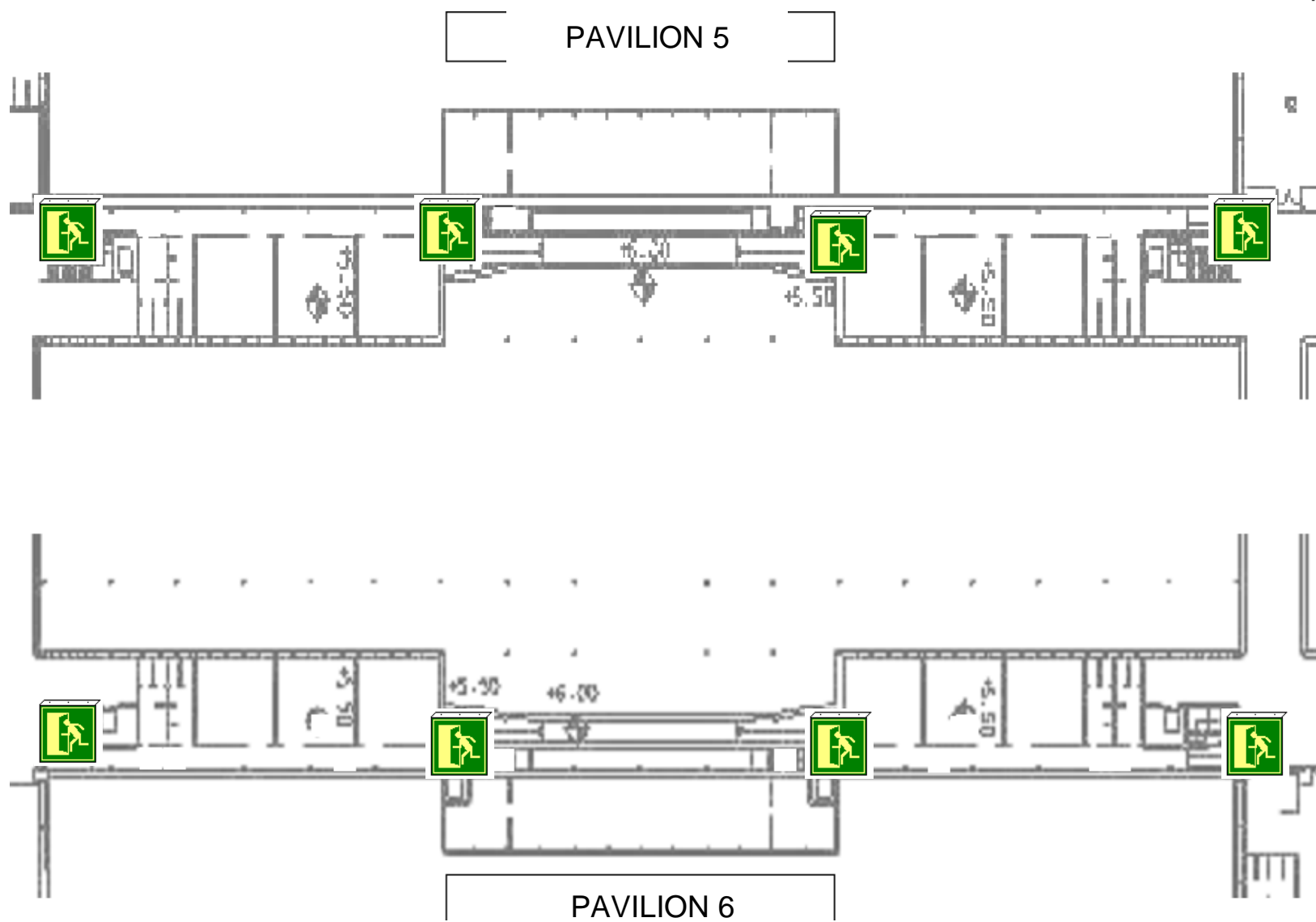


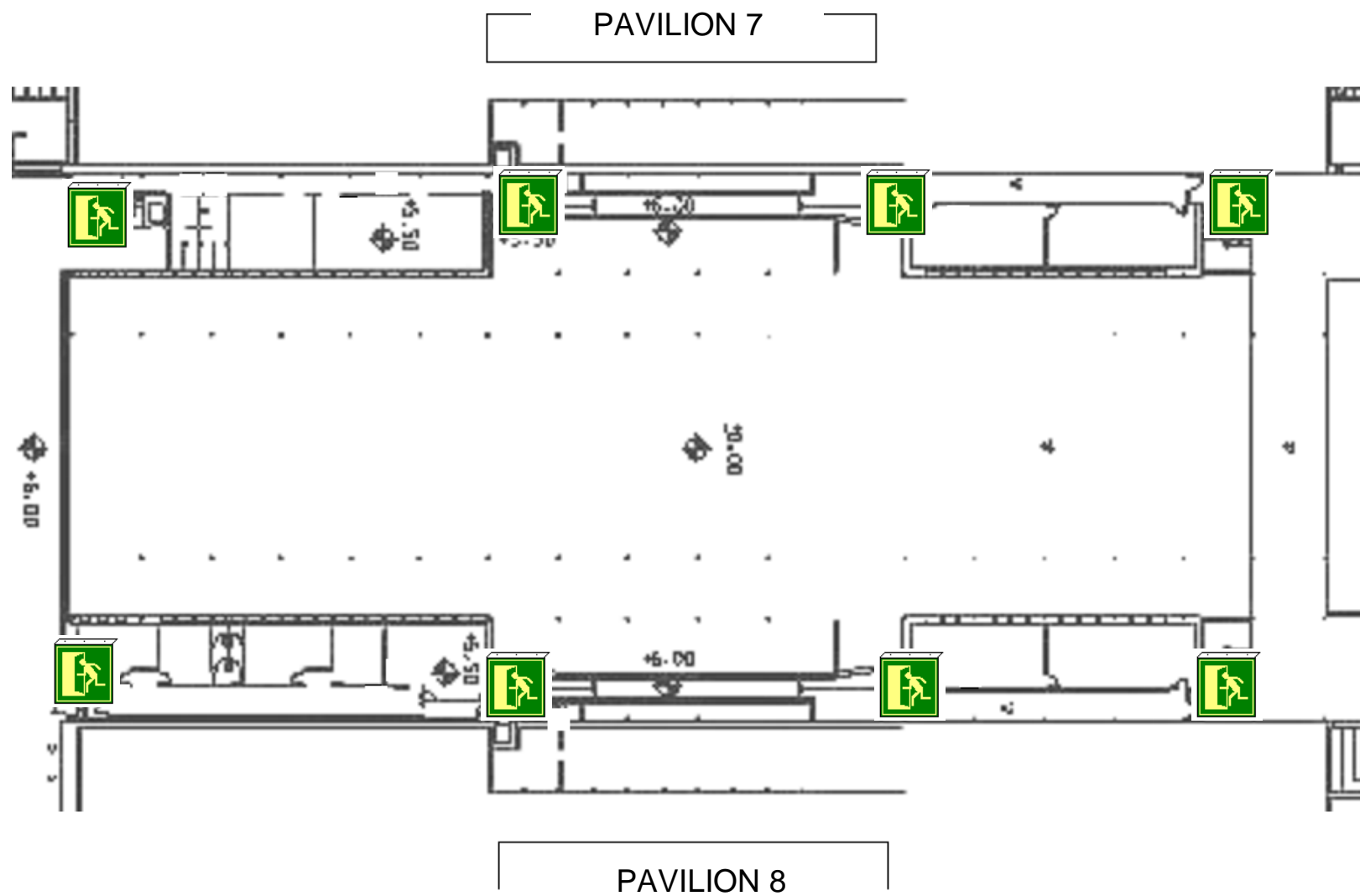


NORTHERN GATE
FIRST FLOOR

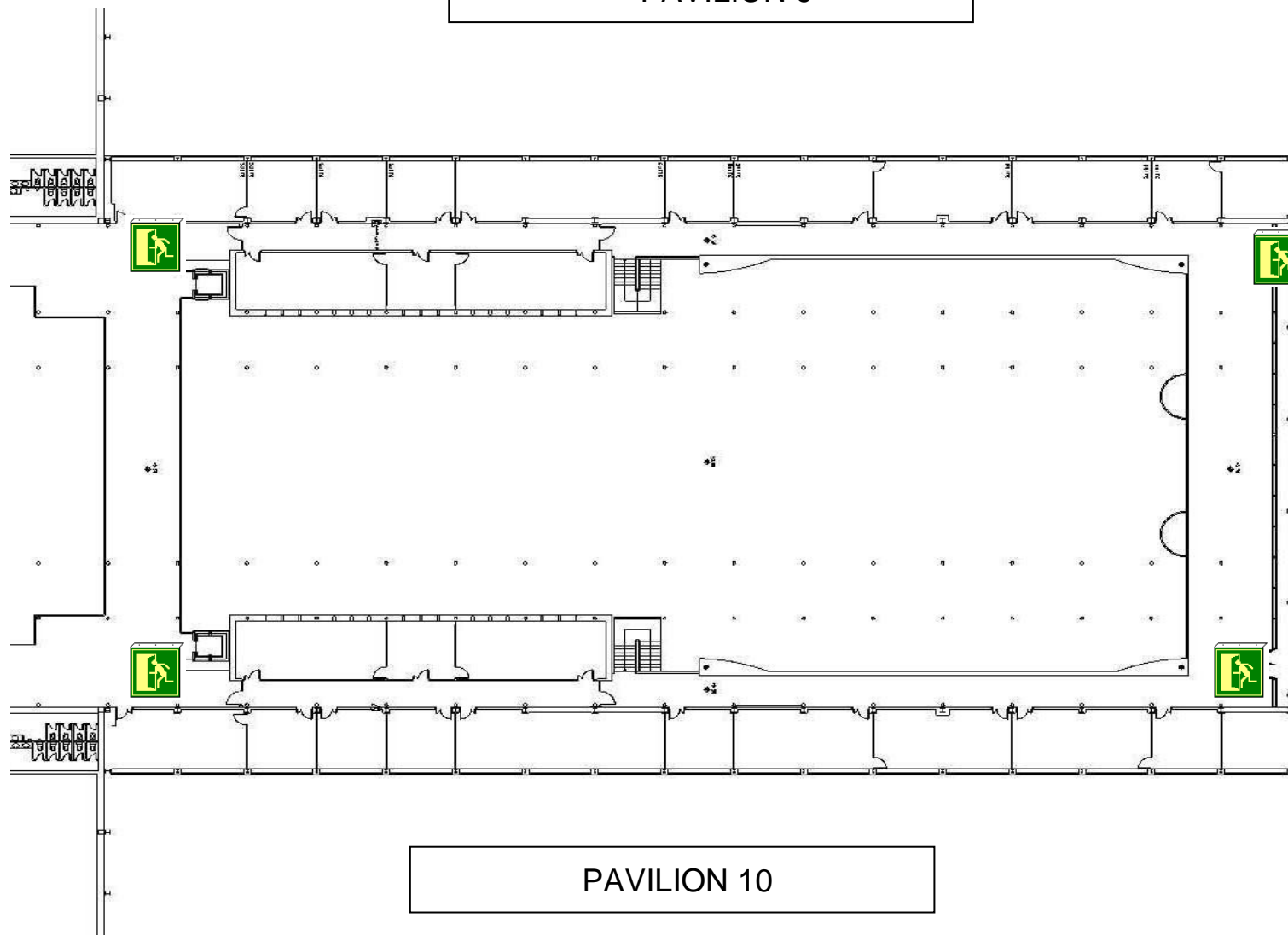
MULTI-PURPOSE ROOMS (CENTRAL AVENUE) FIRST FLOOR





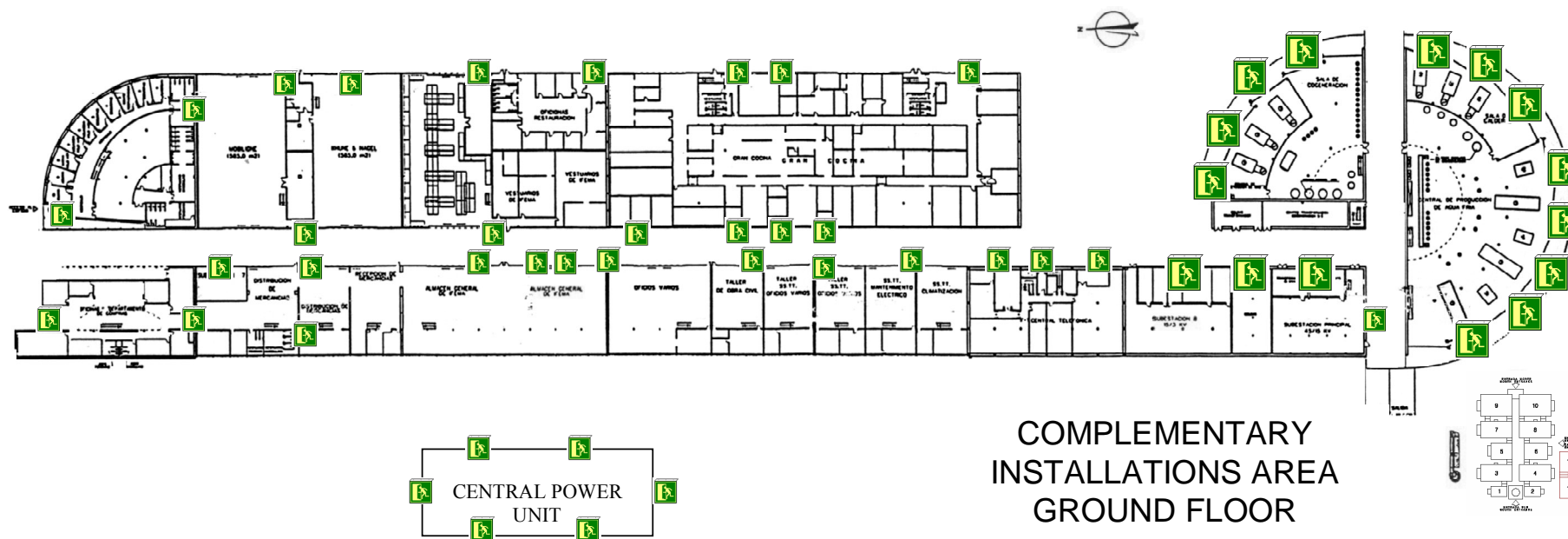


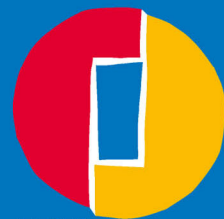
PAVILION 9



PAVILION 10

COMPLEMENTARY AREAS





IFEMA
Feria de
Madrid

www.ifema.es